

ALL TERRAIN CRANE 50 TONS

GROVE AT750D

BOOM LENGTHS:
35 TO 110 FT

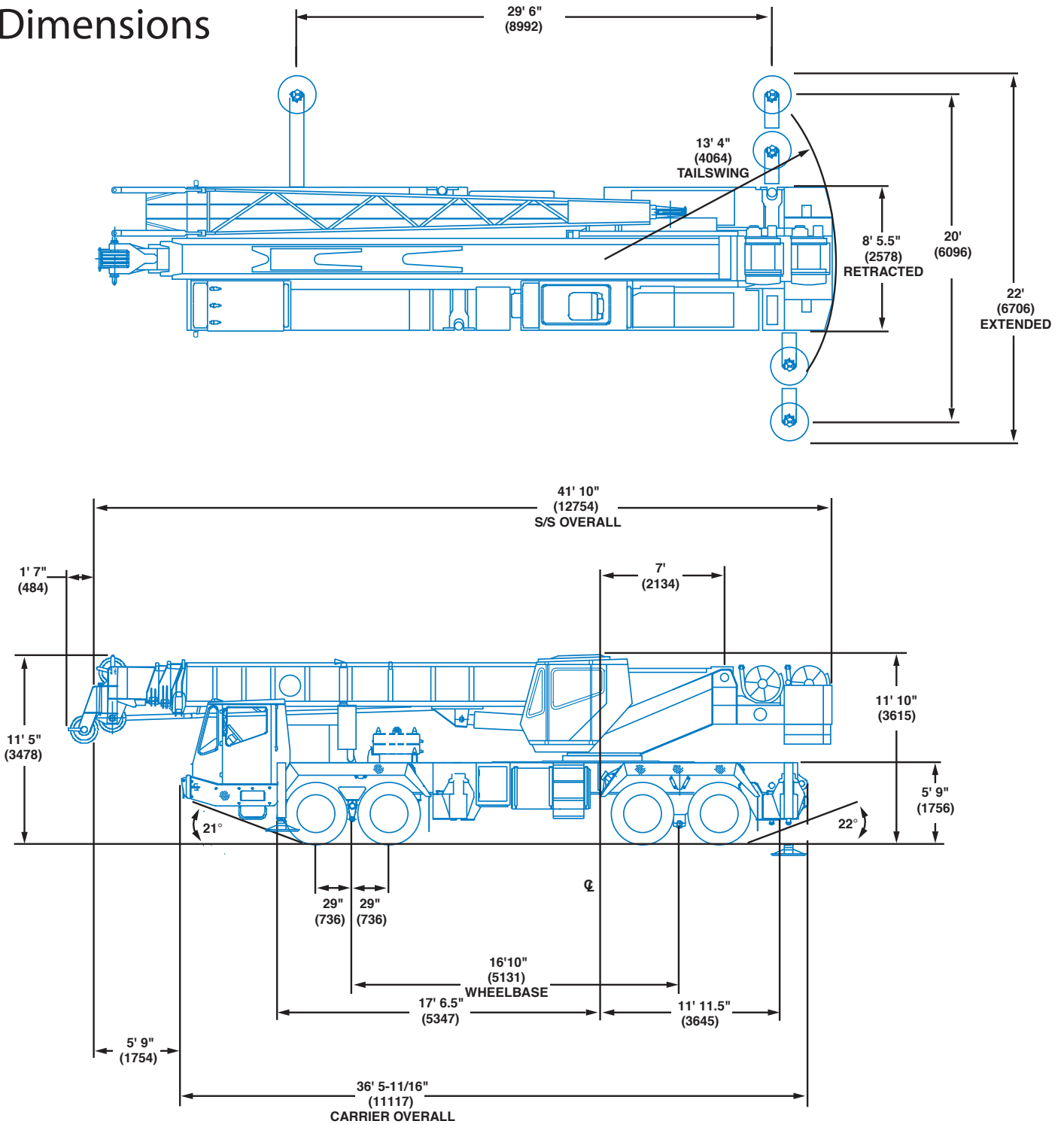
JIB LENGTHS:
32 TO 56 FT

JIB OFFSETS:
0 - 15 - 30



NOTES:

Dimensions



Note: () Reference dimensions in mm

TURNING RADIUS

FRONT STEER	COORDINATED STEER
44' 5" (13538)	24' 9-5/8" (75600)

CLEARANCE RADIUS

FRONT STEER	COORDINATED STEER
5' 7" (15722)	33' 6" (10210)

FOR 16.00R21 & 17.50R25 TIRES



PORTLAND OFFICE: 503.283.3111
 SEATTLE OFFICE: 206.784.1054
WWW.NESSCAMPBELL.COM

**RATED LIFTING CAPACITIES IN POUNDS ON OUTRIGGERS FULLY EXTENDED - 360 DEGREES
35 FT. - 110 FT. BOOM (8X8 CARRIER)**

Radius in Feet	#0001									
	Main Boom Length in Feet									
	35	40	50	*60	70	80	90	100	110	
9	@ 100,000 (67.5)									
9	90,000 (67.5)									
10	80,000 (66)	68,000 (69.5)	58,150 (74)							
12	67,400 (52)	63,800 (66)	55,450 (71.5)	44,600 (75)						
15	56,500 (56)	54,500 (61)	48,050 (67.5)	42,250 (71.5)	35,600 (74.5)	33,000 (77)				
20	44,000 (44.5)	43,000 (52)	39,400 (61)	33,600 (66.5)	30,500 (70.5)	28,000 (73.5)	25,500 (75.5)	23,300 (77.5)		
25	33,500 (28.5)	33,000 (41.5)	32,400 (54)	27,750 (61)	25,200 (66)	23,800 (69.5)	22,000 (72)	20,400 (74.5)	18,500 (76)	
30		26,500 (27)	26,500 (46)	23,350 (55)	21,100 (61)	20,400 (65.5)	19,300 (68.5)	17,550 (71.5)	15,750 (73.5)	
35			21,500 (36.5)	20,000 (49)	18,050 (56)	17,400 (61.5)	16,400 (65)	15,200 (68)	13,650 (70.5)	
40	See Note 16		16,650 (24)	16,150 (41.5)	15,650 (50.5)	15,050 (57)	14,150 (61.5)	13,300 (65)	12,000 (68)	
45				12,700 (33)	13,600 (45)	13,200 (52.5)	12,350 (57.5)	11,550 (61.5)	10,600 (65)	
50				10,100 (21.5)	10,950 (38.5)	11,600 (47.5)	10,850 (53.5)	10,100 (58.5)	9,500 (62)	
55					8,840 (31)	9,520 (42)	9,630 (49.5)	8,950 (54.5)	8,470 (58.5)	
60					7,140 (20)	7,820 (36)	8,410 (45)	7,950 (51)	7,500 (55.5)	
65						6,430 (29)	7,040 (40)	7,080 (47)	6,670 (52)	
70						5,270 (19)	5,900 (34)	6,250 (42.5)	5,940 (48.5)	
75							4,930 (27.5)	5,270 (38)	5,300 (45)	
80							4,100 (18)	4,420 (32.5)	4,700 (40.5)	
85								3,700 (26)	3,970 (36)	
90								3,060 (17)	3,330 (31)	
95									2,760 (25)	
100									2,260 (16)	
Minimum boom angle (degrees) for indicated length (no load)										0
Maximum boom length (feet) at 0 degrees boom angle (no load)										110

Note: () Boom angles are in degrees.

*60 ft. boom length is with inner-mid extended and outer-mid & fly retracted.

#LMI operating code. Refer to LMI manual for instructions.

@ Maximum lifting capacity of 100,000 lbs. over rear only within defined arc of 6 degrees either side of centerline.

GROVE AT 750D



PORTLAND OFFICE: 503.283.3111
SEATTLE OFFICE: 206.784.1054
WWW.NESSCAMPBELL.COM

**RATED LIFTING CAPACITIES IN POUNDS ON OUTRIGGERS FULLY EXTENDED - 360 DEGREES
32 FT. - 56 FT. TELE EXTENSION**

Radius in Feet	32 ft. LENGTH			44 ft. LENGTH			56 ft. LENGTH		
	#0021	#0022	#0023	#0031	#0032	#0033	#0041	#0042	#0043
	0° OFFEST	15° OFFEST	30° OFFEST	0° OFFEST	15° OFFEST	30° OFFEST	0° OFFEST	15° OFFEST	30° OFFEST
30	9,500 (78)								
35	8,710 (76)	*7,500 (78)		7,320 (77.5)					
40	8,000 (74)	7,070 (75.5)	*5,800 (78)	6,880 (75.5)			5,560 (77)		
45	7,340 (71.5)	6,760 (73.5)	5,690 (76)	6,490 (74)	5,060 (77.5)		5,520 (75.5)		
50	6,740 (69.5)	5,470 (71.5)	5,440 (73.5)	6,140 (72)	4,840 (75.5)	*3,770 (78)	4,970 (73.5)	3,900 (78)	
55	6,190 (67)	6,210 (69)	5,210 (71.5)	5,820 (69.5)	4,650 (73.5)	3,600 (76)	4,710 (72)	3,740 (76)	
60	5,500 (65)	5,970 (67)	5,010 (69)	5,530 (67.5)	4,460 (71.5)	3,450 (75)	4,480 (74)	3,600 (74.5)	2,650 (78)
65	4,850 (62.5)	5,280 (64.5)	4,820 (67)	5,220 (65.5)	4,300 (69.5)	3,320 (72)	4,270 (68)	3,410 (72.5)	2,540 (76)
70	4,270 (60)	4,670 (62)	4,650 (64.5)	4,640 (63.5)	4,140 (67.5)	3,190 (70)	4,070 (66.5)	3,220 (70.5)	2,430 (74)
75	3,740 (57.5)	4,110 (59.5)	4,420 (62)	4,110 (61.5)	3,940 (65)	3,070 (67.5)	3,890 (64.5)	3,050 (68.5)	2,340 (72.5)
80	3,260 (55)	3,600 (57)	3,880 (59.5)	3,640 (59)	3,750 (63)	2,970 (65.5)	3,720 (62.5)	2,890 (66.5)	2,250 (70)
85	2,810 (52.5)	3,120 (54.5)	3,380 (57)	3,200 (57)	3,570 (61)	2,870 (63)	3,530 (60.5)	2,750 (64.5)	2,170 (68)
90	2,410 (49.5)	2,690 (52)	2,920 (54)	2,800 (54.5)	3,190 (58.5)	2,780 (60.5)	3,130 (58.5)	2,620 (62.5)	2,100 (66)
95	2,030 (47)	2,290 (49)	2,490 (51)	2,430 (52)	2,790 (56)	2,700 (58)	2,760 (56.5)	2,500 (60.5)	2,030 (64)
100	1,690 (43.5)	1,920 (46)	2,100 (48)	2,080 (49.5)	2,420 (53.5)	2,630 (55.5)	2,420 (54.5)	2,390 (58.5)	1,970 (61.5)
105	1,370 (40.5)	1,580 (42.5)	1,730 (45)	1,770 (47)	2,070 (51)	2,320 (52.5)	2,110 (52)	2,290 (56)	1,910 (59.5)
110	1,070 (37)	1,250 (39)	1,380 (41.5)	1,470 (44)	1,750 (48.5)	1,970 (50)	1,820 (49.5)	2,180 (54)	1,860 (57)
115				1,200 (41)	1,450 (45.5)	1,640 (46.5)	1,540 (47.5)	1,880 (51.5)	1,810 (54)
120							1,290 (45)	1,600 (48.5)	1,670 (51.5)

Note: () Boom angles are in degrees.

*This capacity is based on maximum boom angle.

#LMI operating code. Refer to LMI manual for instructions.

1. All capacities above the bold line are based on structural strength of boom extension.

2. 32 ft, 44 ft & 56 ft boom extension lengths may be used for double or single line lifting service.

3. Radii listed are for a fully extended boom with the boom extension erected. For main boom lengths less than fully extended, the rated loads are determined by boom angle. Use only the column which corresponds to the boom extension length and offset for which the machine is configured. For boom angles not shown, use rating of the next lower boom angle.

4. WARNING: Operation of this machine with heavier loads than the capacities listed is strictly prohibited. Machine tipping with boom extension occurs rapidly and without advance warning.

5. Boom angle is the angle above or below horizontal of the longitudinal axis of the boom base section after lifting rated load.

6. Capacities listed are with outriggers fully extended and vertical jacks set only.

7. 32 ft - 56 ft TELE OFFSETTABLE BOOM EXTENSION WARNING: For main boom length greater than 80 ft with 32 ft - 56 ft tele boom extension in working position, the boom angle must not be less than 35° since loss of stability will occur causing a tipping condition. The boom angle is not restricted for main boom length equal to or less than 80 ft. This warning also applies for boom extension erection purposes.

GROVE AT 750D
A6-829-009539



PORTLAND OFFICE: 503.283.3111
SEATTLE OFFICE: 206.784.1054
WWW.NESSCAMPBELL.COM