



CONVENTIONAL CRANE

250 TONS

LINK-BELT HC-268

BOOM LENGTHS:
60 TO 300 FT

JIB LENGTHS:
30 TO 90 FT

JIB OFFSETS:
5 - 15 - 25



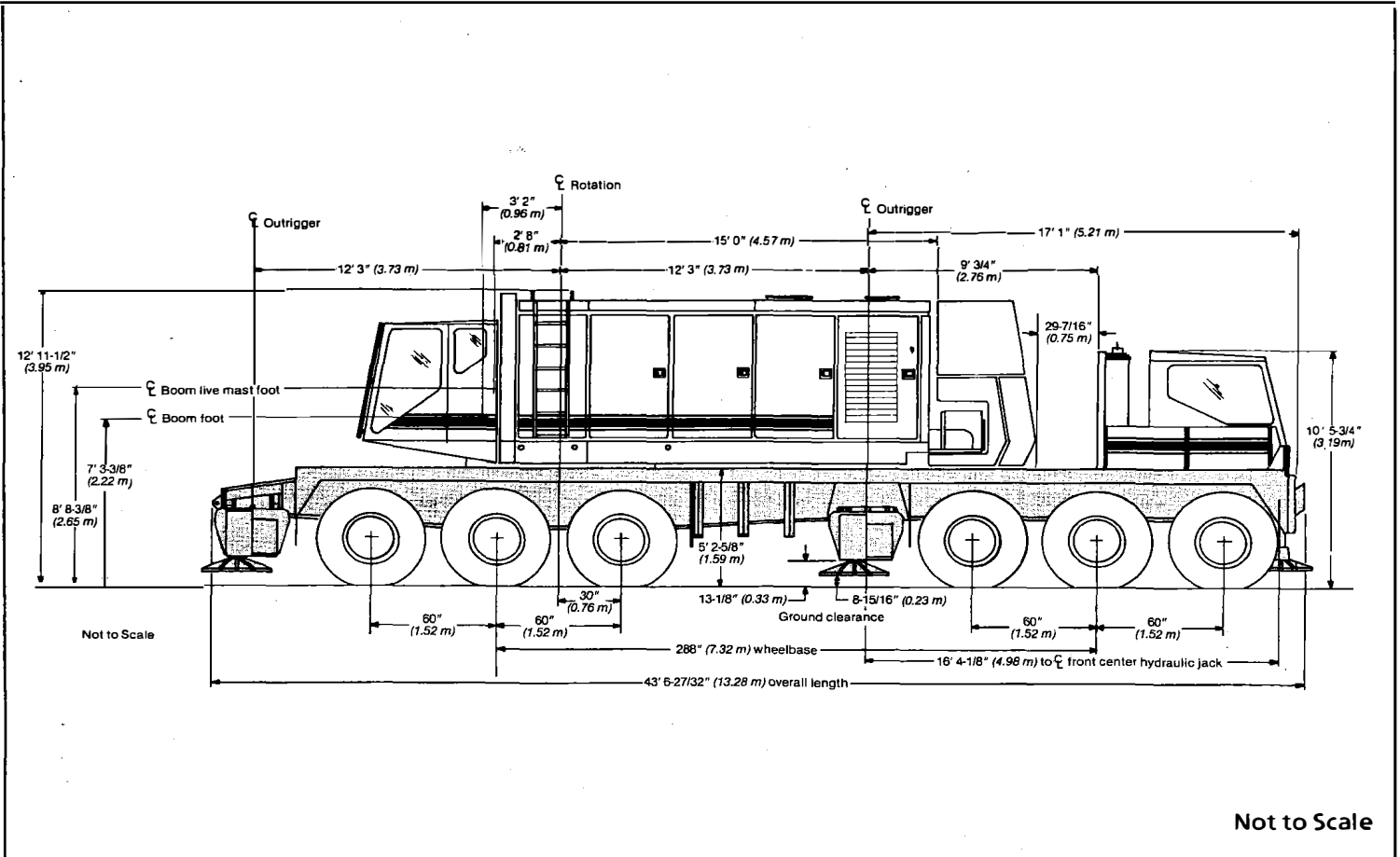
NOTES:

Specifications

Lattice Boom Truck Crane

HC-268

250-ton (227 metric ton)



General dimensions	feet	meters
Overall width, outriggers extended, (over floats)	27' 4"	8.33
Overall width, outriggers extended, (c/l of jacks)	24' 6"	7.46
Overall width, outriggers retracted, (jacks removed)	11' 10"	3.61
Vehicle clearance circle over outside of front bumper	149' 2"	45.97
Vehicle clearance circle over outside of front bumper counterweight	150' 7"	45.90
Minimum ground clearance (at bottom of front bogie beams)	8-7/8"	0.22
Counterweight tailswing (at corners)	18' 9"	5.72
Overall cab width (upper)	11' 10"	3.61
Radius of boom hinge pin	3' 2"	0.97
Height of boom hinge pin	7' 3-3/8"	2.22
Ground clearance under counterweight	5' 5-3/8"	1.65



PORTLAND OFFICE: 503.283.3111
 SEATTLE OFFICE: 206.784.1054
WWW.NESSCAMPBELL.COM

Link-Belt® HC-268 lifting crane capacities — open throat boom

PCSA Class 12-1471
Refer to notes page 7.

Boom — tubular; 80" (2.03 m) wide, 68" (1.73 m) deep with open throat top section, 1¼" (32 mm) diameter boom pendants, boom live mast, and boom midpoint suspension pendants as required.

Jib — tubular; 32" (0.81 m) wide, 24" (0.61 m) deep.

Counterweights — Refer to charts below.

Mounting — rubber tire mobile base: Link-Belt; 12 x 6 drive, 288" (7.32 m) wheelbase, 11' 10" (3.61 m) wide.

Counterweights							
"A" upper		"AB" upper		"A" bumper		"AB" bumper	
Pounds	kilograms	Pounds	kilograms	Pounds	kilograms	Pounds	kilograms
47,000	16 783	85,000	38 556	11,400	5 171	26,700	12 111

Open throat boom or boom + jib machine can lift off ground unassisted, without load.

Standard HC-268 must be equipped with the counterweight combinations below when the indicated boom or boom + jib lengths are used.	Minimum/maximum boom or boom + jib lengths allowed	On outriggers							
		Over rear				Over side			
		Boom		Boom + jib		Boom		Boom + jib	
		Feet	meters	Feet	meters	Feet	meters	Feet	meters
"AB" upper and No bumper	Minimum Maximum	60 300	27.21 136.08	Not applicable		60 280	27.21 127.00	Not applicable	
"A" upper and "A" bumper	Minimum Maximum	60 280	27.21 127.00	Not applicable		60 250	27.21 113.40	Not applicable	
"AB" upper and "A" bumper	Minimum Maximum	90 310	40.82 140.61	60 + 30 280 + 90	27.21 + 9.14 127.00 + 40.82	90 290	40.82 131.54	60 + 30 250 + 90	27.21 + 13.60 113.40 + 40.82
"AB" upper and "AB" bumper	Minimum Maximum	150 330	68.04 149.68	300 + 90	Not applicable 136.08 + 40.82	150 290	68.04 131.54	260 + 90	Not applicable 117.93 + 40.82

Machine travel ^① with open throat boom + jib, with no load ^②

Standard HC-268 must be equipped with the counterweight combinations below when the indicated boom or boom + jib lengths are used.	Minimum/maximum boom or boom + jib lengths allowed	On tires ^③							
		Jobsite moves at 1 m.p.h. (1.61 km/h) with boom or boom + jib in the air ^④ , and with upper facing rear only.				Jobsite moves at 5 m.p.h. (8.05 km/h), with boom or boom + jib horizontal over rear only, and supporting with standard suspension.			
		Boom		Boom + jib		Boom		Boom + jib	
		Feet	meters	Feet	meters	Feet	meters	Feet	meters
"A" upper and "A" bumper	Minimum Maximum	80 280	24.38 85.33	Not applicable		60 130	18.29 39.62	Not applicable	
"AB" upper and No bumper	Minimum Maximum	80 300	24.38 91.44	Not applicable		60 140	18.29 42.67	Not applicable	
"AB" upper and "A" bumper	Minimum Maximum	90 310	27.43 94.48	60 + 30 280 + 90	18.29 + 9.14 85.34 + 27.43	90 140	27.43 42.67	60 + 30 110 + 90	18.29 + 9.14 33.53 + 27.43
"AB" upper and "AB" bumper	Minimum Maximum	150 ^⑤ 330	45.72 100.58	290 + 30 300 + 90	88.39 + 9.14 91.44 + 27.43	150 150	45.72 45.72	Not applicable	

^① Hook block may be carried only when attached to carrier.

^② Limited to 85% of available stability with machine standing level on firm supporting surface.

^③ Air pressure in front and rear tires to be 100 p.s.i. (689 kPa) at 1 m.p.h. (1.6 km/h) or 5 m.p.h. (8.0 km/h).

^④ Minimum/maximum boom lengths beyond 80' (24.38 m) and minimum maximum boom + jib lengths — with boom or boom + jib in the air — must be at 80' (24.38 m) hook radius.

^⑤ Boom lengths 150' to 240' (45.72 to 73.15 m) must be at 110' (33.53 m) hook radius.

Caution: This material is for reference only. Operator must refer to in-cab capacity plate to determine allowable machine lifting capacities and operating procedures.



PORTLAND OFFICE: 503.283.3111
SEATTLE OFFICE: 206.784.1054
WWW.NESSCAMPBELL.COM

		Capacities on outriggers only														
HC-268 open throat boom		"AB" upper counterweight only				"A" bumper counterweights				"AB" upper and "A" bumper counterweights						
Length	Radius Feet / meters	Angle Deg.	Boom point height Feet / meters	Over rear		Over side and 360° swing		Over rear		Over side and 360° swing		Over rear		Over side and 360° swing		
				Lbs.	kg	Lbs.	kg	Lbs.	kg	Lbs.	kg	Lbs.	kg	Lbs.	kg	
60' (18.28 m)	12	3.65	81.5	66' 7"	500.0*	226.8*	450.0*	204.1*	445.4*	206.6*	392.7*	178.1*	307.7*	139.6*	307.7*	139.6*
	13	3.96	80.6	66' 6"	432.4*	196.1*	432.4*	196.1*	412.8*	187.2*	374.7*	170.0*	300.0*	136.1*	307.7*	139.6*
	14	4.26	79.6	66' 4"	413.3*	187.5*	413.3*	187.5*	383.6*	174.0*	358.1*	162.4*	300.0*	136.1*	300.0*	136.1*
	15	4.57	78.6	66' 1"	395.9*	179.6*	395.9*	179.6*	358.3*	162.5*	342.8*	155.5*	292.4*	132.6*	292.4*	132.6*
	16	4.87	77.7	65' 11"	374.5*	169.9*	374.5*	169.9*	336.0*	152.4*	328.9*	149.2*	285.2*	129.4*	285.2*	129.4*
	17	5.18	76.7	65' 8"	352.5*	159.9*	352.5*	159.9*	316.1*	143.4*	313.8*	142.3*	267.4*	121.3*	267.4*	121.3*
	18	5.48	75.7	65' 5"	333.0*	151.0*	333.0*	151.0*	298.6*	134.4*	296.3*	134.4*	238.6*	108.2*	238.6*	108.2*
	19	5.79	74.7	65' 2"	315.3*	143.0*	315.3*	143.0*	282.7*	128.2*	281.1*	127.5*	198.0*	89.8*	198.0*	89.8*
	20	6.09	73.7	64' 11"	299.5*	135.9*	299.5*	135.9*	268.4*	121.7*	267.7*	121.4*	147.0*	66.3*	147.0*	66.3*
	25	7.62	68.7	63' 2"	238.8*	108.3*	238.8*	108.3*	214.0*	97.1*	214.0*	97.1*	111.0	50.3	214.0*	97.1*
	30	9.14	63.4	61' 0"	198.1*	89.9*	198.1*	89.9*	177.4*	80.5*	177.4*	80.5*	79.6	36.1	177.4*	80.5*
	35	10.66	58.0	58' 2"	169.0*	76.7	169.0*	76.7	151.0*	68.5	136.9	62.1	79.6	36.1	151.0*	68.5
40	12.19	52.1	54' 8"	147.1*	66.7	147.1*	66.7	131.3*	59.6	111.0	50.3	79.6	36.1	131.3*	59.6	
50	15.24	38.7	44' 10"	111.6	50.6	101.4	46.0	97.4	44.2	79.6	36.1	79.6	36.1	97.4	44.2	
60	18.28	18.7	26' 6"	86.6	39.3	78.6	36.7	75.4	34.2	61.3	27.8	61.3	27.8	75.4	34.2	
70' (21.33 m)	13	3.96	81.9	76' 7"	357.7*	162.3*	357.7*	162.3*	357.7*	162.3*	357.7*	162.3*	307.7*	139.6*	357.7*	162.3*
	14	4.26	81.1	76' 5"	348.8*	158.2*	348.8*	158.2*	348.8*	158.2*	348.8*	158.2*	300.0*	136.1*	348.8*	158.2*
	15	4.57	80.3	76' 4"	344.4*	156.2*	344.4*	156.2*	344.4*	156.2*	344.4*	156.2*	300.0*	136.1*	344.4*	156.2*
	16	4.87	79.4	76' 1"	335.8*	152.3*	335.8*	152.3*	335.8*	152.3*	335.8*	152.3*	292.4*	132.6*	335.8*	152.3*
	17	5.18	78.6	75' 11"	327.4*	148.5*	327.4*	148.5*	315.6*	143.2*	313.3*	142.1*	285.2*	129.4*	313.3*	142.1*
	18	5.48	77.8	75' 8"	323.3*	146.6*	323.3*	146.6*	298.2*	135.3*	295.9*	134.2*	267.4*	121.3*	295.9*	134.2*
	19	5.79	76.9	75' 6"	314.8*	142.8*	314.8*	142.8*	282.3*	129.1*	280.7*	127.3*	238.6*	108.2*	280.7*	127.3*
	20	6.09	76.1	75' 2"	299.0*	135.6*	299.0*	135.6*	268.0*	121.6*	267.3*	121.0*	198.0*	89.8*	267.3*	121.0*
	25	7.62	71.8	73' 10"	238.6*	108.2*	238.6*	108.2*	213.7*	96.9	213.7*	96.9	111.0	50.3	213.7*	96.9
	30	9.14	67.5	71' 11"	197.9*	89.8	197.9*	89.8	177.2*	80.4	177.2*	80.4	79.6	36.1	177.2*	80.4
	35	10.66	63.0	69' 7"	168.8*	76.6	168.8*	76.6	150.9*	64.4	137.2	62.2	79.6	36.1	150.9*	64.4
	40	12.19	58.3	66' 10"	146.9*	66.6	146.9*	66.6	131.2*	59.5	111.3	50.5	79.6	36.1	131.2*	59.5
50	15.24	48.0	59' 4"	111.8	50.7	101.7	46.1	97.6	44.3	79.6	36.2	79.6	36.2	97.6	44.3	
60	18.28	35.7	48' 2"	86.8	39.4	78.8	35.7	75.6	34.3	61.6	27.9	61.6	27.9	75.6	34.3	
70	21.33	17.3	28' 1"	70.5	32.0	63.8	28.9	61.2	27.8	49.5	22.5	61.2	27.8	61.2	27.8	
90' (27.43 m)	16	4.87	81.8	96' 5"	307.7*	139.6*	307.7*	139.6*	307.7*	139.6*	307.7*	139.6*	307.7*	139.6*	307.7*	139.6*
	17	5.18	81.2	96' 2"	300.0*	136.1*	300.0*	136.1*	300.0*	136.1*	300.0*	136.1*	300.0*	136.1*	300.0*	136.1*
	18	5.48	80.5	96' 1"	300.0*	136.1*	300.0*	136.1*	300.0*	136.1*	300.0*	136.1*	300.0*	136.1*	300.0*	136.1*
	19	5.79	79.9	95' 11"	292.4*	132.6*	292.4*	132.6*	282.3*	129.1*	280.8*	127.4*	267.4*	121.3*	282.3*	129.1*
	20	6.09	79.2	95' 8"	285.2*	129.4*	285.2*	129.4*	268.1*	121.6*	267.4*	121.3*	238.6*	108.2*	267.4*	121.3*
	25	7.62	76.0	94' 7"	238.6*	108.2*	238.6*	108.2*	213.9*	97.0	213.9*	97.0	198.0*	89.8*	213.9*	97.0
	30	9.14	72.7	93' 2"	198.0*	89.8	198.0*	89.8	177.3*	80.4	177.3*	80.4	147.0*	66.3	177.3*	80.4
	35	10.66	69.3	91' 6"	168.9*	76.6	168.9*	76.6	150.9*	68.4	138.6	62.9	146.1	66.3	150.9*	68.4
	40	12.19	65.8	89' 5"	147.0*	66.7	141.9	64.4	131.3*	59.6	112.1*	50.8	112.1*	50.8	131.3*	59.6
	50	15.24	58.6	84' 1"	112.3	50.9	102.3	46.4	98.3	44.6	80.4	36.5	80.4	36.5	98.3	44.6
	60	18.28	50.8	77' 1"	79.2	39.6	79.2	35.9	76.0	34.5	62.1	28.2	62.1	28.2	76.0	34.5
	70	21.33	42.0	67' 7"	70.9	32.2	64.2	29.1	61.6	27.9	49.9	22.6	49.9	22.6	61.6	27.9
80	24.38	31.4	54' 2"	59.2	26.9	55.5	24.3	51.3	23.3	41.3	18.7	41.3	18.7	51.3	23.3	
90	27.43	15.2	31' 0"	50.5	22.9	45.5	20.6	43.6	19.8	35.0	15.9	35.0	15.9	43.6	19.8	
110' (33.53 m)	19	5.79	81.7	116' 1"	255.1*	115.7*	255.1*	115.7*	255.1*	115.7*	255.1*	115.7*	255.1*	115.7*	255.1*	115.7*
	20	6.09	81.2	116' 0"	252.0*	114.3*	252.0*	114.3*	252.0*	114.3*	252.0*	114.3*	252.0*	114.3*	252.0*	114.3*
	25	7.62	78.6	115' 1"	236.2*	107.1*	236.2*	107.1*	212.7*	96.5	212.7*	96.5	196.9*	89.3*	212.7*	96.5
	30	9.14	75.9	114' 0"	196.9*	89.3	196.9*	89.3	176.4*	80.0	176.4*	80.0	167.9*	76.2*	176.4*	80.0
	35	10.66	73.2	112' 7"	167.9*	76.2	167.9*	76.2	150.0*	68.0	138.5*	62.8	138.5*	62.8	150.0*	68.0
	40	12.19	70.4	110' 11"	146.1*	66.3	141.7	64.3	130.4*	59.1	112.0	50.1	112.0	50.1	130.4*	59.1
50	15.24	64.8	106' 10"	112.0	50.8	102.1	46.3	98.1	44.5	80.2	36.4	80.2	36.4	98.1	44.5	
60	18.28	58.9	101' 6"	86.9	39.4	78.9	35.8	75.7	34.3	61.8	28.0	61.8	28.0	75.7	34.3	

(continued)

① Capacities shown in thousands of pounds and kilograms.
 ② Measured vertically from center of boom head sheaves to ground with machine standing on tires.
 ③ Capacities for 360° swing applicable only when front center jack and front and rear outriggers are set in proper working position.



PORTLAND OFFICE: 503.283.3111
 SEATTLE OFFICE: 206.784.1054
 WWW.NESSCAMPBELL.COM

HC-268 lifting crane capacities

Refer to **Notes** on page 7.

HC-268 open throat boom		Capacities on outriggers only														
		"AB" upper counterweight only						"A" upper and "AB" bumper counterweights						"AB" upper and "AB" bumper counterweights		
		Radius		Boom point height		Over side and 360° swing		Over rear		Over side and 360° swing		Over rear		Over side and 360° swing		
Length	Feet	Meters	Deg.	Feet	Meters	Lbs.	Kg	Lbs.	Kg	Lbs.	Kg	Lbs.	Kg	Lbs.	Kg	
110' (33.53 m)	70	21.34	52.6	81.7	135' 11"	41.43	218.4*	99.1*	218.4*	99.1*	218.4*	99.1*	218.4*	99.1*	218.4*	
	80	24.38	45.7	80.3	135' 5"	41.28	207.5*	94.1*	207.5*	94.1*	207.5*	94.1*	207.5*	94.1*	207.5*	
	90	27.43	37.9	74' 10"	134' 6"	40.99	195.7*	88.8*	195.7*	88.8*	195.7*	88.8*	195.7*	88.8*	195.7*	
	100	30.48	28.3	59' 6"	133' 4"	40.64	166.8*	75.7*	149.3*	67.7*	138.4	62.8	166.8*	75.7*	149.3*	
	110	33.53	13.8	33' 6"	132' 0"	40.22	145.1*	65.8*	141.4	64.1	129.5*	58.7*	112.0	50.8	145.1*	
130' (39.62 m)	22	6.71	81.7	81.7	135' 11"	41.43	218.4*	99.1*	218.4*	99.1*	218.4*	99.1*	218.4*	99.1*	218.4*	
	25	7.62	80.3	80.3	135' 5"	41.28	207.5*	94.1*	207.5*	94.1*	207.5*	94.1*	207.5*	94.1*	207.5*	
	30	9.14	78.7	75.8	133' 4"	40.64	166.8*	75.7*	149.3*	67.7*	138.4	62.8	166.8*	75.7*	149.3*	
	35	10.67	75.8	73.5	132' 0"	40.22	145.1*	65.8*	141.4	64.1	129.5*	58.7*	112.0	50.8	145.1*	
	40	12.19	68.9	71.9	128' 7"	39.19	111.9	50.8	101.7	46.1	97.7	44.3	79.8	36.2	114.2*	
150' (45.72 m)	60	18.29	64.1	68.9	124' 2"	37.86	86.4	39.2	78.4	35.6	75.2	34.1	61.4	27.9	93.7*	
	70	21.34	59.1	64.1	121' 10"	36.21	70.1	31.8	63.5	28.8	60.9	27.6	49.2	22.3	76.9	
	80	24.38	53.8	59.1	118' 10"	34.79	58.4	26.5	52.8	24.0	50.5	22.9	40.6	18.4	64.5	
	90	27.43	48.1	53.8	112' 2"	34.19	49.7	22.5	44.8	20.3	42.8	19.4	34.4	15.6	55.0	
	100	30.48	41.9	48.1	104' 0"	31.71	43.0	19.5	38.7	17.6	37.1	16.8	29.5	13.4	47.7	
170' (51.82 m)	110	33.53	34.7	41.9	94' 5"	24.80	37.7	17.1	34.0	15.4	32.4	14.7	25.5	11.6	41.9	
	120	36.58	26.0	34.7	84' 4"	19.60	33.5	15.2	29.9	13.6	28.5	12.9	22.3	10.1	37.3	
	130	39.62	12.7	34.7	72' 11"	10.92	29.8	13.5	26.6	12.1	25.3	11.5	19.5	8.8	33.3	
	25	7.62	81.6	81.6	155' 8"	47.46	185.6*	84.2*	185.6*	84.2*	185.6*	84.2*	185.6*	84.2*	185.6*	84.2*
	30	9.14	79.7	79.7	154' 11"	47.21	174.0*	78.9*	174.0*	78.9*	174.0*	78.9*	174.0*	78.9*	174.0*	78.9*
170' (51.82 m)	35	10.67	77.7	77.7	153' 11"	46.90	165.2*	74.9*	165.2*	74.9*	165.2*	74.9*	165.2*	74.9*	165.2*	74.9*
	40	12.19	75.8	75.8	152' 8"	46.54	144.0*	65.3*	141.0	65.0	128.4*	62.2	111.6	50.6	144.0*	65.3*
	50	15.24	71.8	71.8	149' 10"	45.66	111.4	50.5	101.2	45.9	97.2	44.1	79.4	36.0	113.1*	51.3*
	60	18.29	67.7	67.7	146' 1"	44.53	85.9	39.0	77.9	35.3	74.7	33.9	60.9	27.6	92.8*	42.1*
	70	21.34	63.5	63.5	141' 7"	43.15	69.6	31.6	63.0	28.6	60.3	27.4	48.7	22.1	76.4	34.7
170' (51.82 m)	80	24.38	59.2	59.2	136' 1"	41.49	57.9	26.3	52.2	23.7	50.0	22.7	40.0	18.1	63.9	29.0
	90	27.43	54.6	54.6	129' 7"	39.50	49.1	22.3	44.2	20.0	42.3	19.2	33.9	15.4	54.4	24.7
	100	30.48	49.8	49.8	121' 10"	37.14	42.4	19.2	38.1	17.3	36.6	16.7	28.9	13.1	47.1	21.4
	110	33.53	44.6	44.6	112' 7"	34.32	37.3	16.9	33.4	15.2	31.9	14.5	25.0	11.3	41.3	18.7
	120	36.58	38.8	38.8	101' 5"	30.90	33.0	15.0	29.4	13.3	28.0	12.7	21.7	9.8	36.8	16.7
170' (51.82 m)	130	39.62	32.3	32.3	87' 5"	26.63	29.3	13.3	26.1	11.8	24.8	11.2	19.1	8.7	32.8	14.9
	140	42.67	24.2	24.2	68' 8"	20.95	26.2	11.9	23.2	10.5	22.1	10.0	16.8	7.6	29.4	13.3
	150	45.72	11.8	11.8	38' 0"	11.57	23.6	10.7	20.8	9.4	19.7	8.9	14.8	6.7	26.6	12.1
	27	8.23	81.9	81.9	175' 7"	53.53	157.0*	71.2*	157.0*	71.2*	157.0*	71.2*	157.0*	71.2*	157.0*	71.2*
	30	9.14	80.9	80.9	175' 2"	53.39	153.1*	69.4*	153.1*	69.4*	153.1*	69.4*	153.1*	69.4*	153.1*	69.4*
170' (51.82 m)	35	10.67	79.2	79.2	174' 4"	53.12	145.4*	66.0*	145.4*	66.0*	145.4*	66.0*	145.4*	66.0*	145.4*	66.0*
	40	12.19	77.5	77.5	173' 4"	52.81	140.0*	63.5*	140.0*	63.5*	140.0*	63.5*	140.0*	63.5*	140.0*	63.5*
	50	15.24	74.0	74.0	170' 8"	52.03	110.9	50.3	100.7	45.7	96.7	43.9	78.8	35.7	112.1*	50.8*
	60	18.29	70.5	70.5	167' 6"	51.06	85.3	38.7	77.3	35.1	74.5	33.8	60.4	27.4	91.8*	41.6*
	70	21.34	66.9	66.9	163' 7"	49.87	69.0	31.3	62.4	28.3	59.7	27.1	48.1	21.9	75.7	34.3
170' (51.82 m)	80	24.38	63.1	63.1	158' 11"	48.44	57.2	25.9	51.6	23.4	49.4	22.4	39.4	17.9	63.3	28.7
	90	27.43	59.3	59.3	153' 5"	46.77	48.5	22.0	43.6	19.8	41.6	18.9	33.3	15.1	53.8	24.4
	100	30.48	55.3	55.3	147' 0"	44.81	41.8	19.0	37.4	17.0	36.0	16.3	28.3	12.8	46.4	21.0
	110	33.53	51.1	51.1	139' 6"	42.53	36.7	16.6	32.8	14.9	31.3	14.2	24.4	11.1	40.6	18.4
	120	36.58	46.6	46.6	130' 10"	39.86	32.4	14.7	28.8	13.1	27.4	12.4	21.1	9.6	36.1	16.4
170' (51.82 m)	130	39.62	41.7	41.7	120' 6"	36.72	28.7	13.0	25.5	11.6	24.2	11.0	18.4	8.3	32.2	14.6
	140	42.67	36.4	36.4	108' 2"	32.97	25.6	11.6	22.6	10.3	21.5	9.8	16.2	7.3	28.8	13.1
	150	45.72	30.3	30.3	93' 0"	28.34	23.0	10.4	20.2	9.2	19.1	8.7	14.2	6.4	26.0	11.8
	160	48.77	22.7	22.7	72' 11"	22.22	20.7	9.4	18.2	8.3	17.1	7.8	12.6	5.7	23.5	10.7
	170	51.82	11.1	11.1	40' 0"	12.18	18.7	8.5	16.3	7.4	15.4	7.0	11.1	5.0	21.3	9.7

① Capacities shown in thousands of pounds and kilograms.
② Measured vertically from center of boom head sheaves to ground with machine standing on tires.
③ Capacities for 360° swing applicable only when front center jack and rear outriggers are set in proper working position.

(continued)



PORTLAND OFFICE: 503.283.3111
SEATTLE OFFICE: 206.784.1054
WWW.NESSCAMPBELL.COM

HC-268 lifting crane capacities

Refer to **Notes** page 7.

HC-268 open throat boom				Capacities on outriggers only													
Length	Radius Feet / meters	Angle Deg.	Boom point height Feet / meters	"A" upper counterweights				"AB" upper counterweights				"AB" upper and "AB" bumper counterweights					
				Over rear		Over side and 360° swing		Over rear		Over side and 360° swing		Over rear		Over side and 360° swing			
				Lbs.	kg	Lbs.	kg	Lbs.	kg	Lbs.	kg	Lbs.	kg	Lbs.	kg		
190' (57.91 m)	30	9.14	81.9	195' 5"	59.55	133.8*	60.7*	133.8*	60.7*	133.8*	60.7*	133.8*	60.7*	133.8*	60.7*	133.8*	60.7*
	35	10.67	80.4	194' 7"	59.32	130.4*	59.1*	130.4*	59.1*	130.4*	59.1*	130.4*	59.1*	130.4*	59.1*	130.4*	59.1*
	40	12.19	78.8	193' 8"	59.04	125.5*	56.9*	125.5*	56.9*	125.5*	56.9*	125.5*	56.9*	125.5*	56.9*	125.5*	56.9*
	50	15.24	75.7	191' 5"	58.35	110.3*	50.0	96.1*	43.6	78.3	35.5	103.3*	47.1	90.7*	41.1	111.4*	50.5*
	60	18.29	72.6	188' 7"	57.48	84.7	38.4	73.9	33.5	59.8	27.1	79.2	35.9	67.1*	30.9	82.5	37.4
	70	21.34	69.4	185' 1"	56.43	68.4	31.0	61.8	28.0	59.1	21.5	63.8	28.9	57.5	26.6	66.6	30.2
	80	24.38	66.1	181' 1"	55.19	56.6	25.7	50.9	23.1	48.7	17.6	62.6	28.4	52.7	23.9	55.0	24.9
	90	27.43	62.8	176' 4"	53.73	47.8	21.7	42.9	19.5	41.0	14.8	55.1	24.1	44.4	20.1	56.5	25.6
	100	30.48	59.4	170' 10"	52.05	41.1	18.6	37.1	16.8	35.4	12.7	48.5	20.7	38.1	17.3	52.5	23.9
	110	33.53	55.8	164' 5"	50.11	36.1	16.4	32.2	14.6	30.6	10.8	43.9	19.9	33.4	15.2	49.6	22.5
	120	36.58	52.1	157' 1"	47.89	31.7	14.4	28.1	12.7	26.7	9.3	39.1	17.7	29.2	13.2	43.9	19.9
	130	39.62	48.1	148' 10"	45.34	28.1	12.7	24.8	11.2	23.5	8.1	35.5	16.1	25.8	11.7	40.6	18.5
	140	42.67	43.9	139' 1"	42.40	25.0	11.3	22.0	10.0	20.8	7.0	32.0	14.5	22.9	10.4	37.2	17.0
	150	45.72	39.4	127' 11"	38.98	22.4	10.2	19.6	8.9	18.5	6.2	28.4	12.5	20.4	9.3	32.9	15.5
	160	48.77	34.4	114' 6"	34.91	20.1	9.1	17.5	7.9	16.5	5.4	25.3	11.5	18.3	8.3	28.6	14.0
	170	51.82	28.6	98' 2"	29.94	18.1	8.2	15.7	7.1	14.7	4.7	22.9	10.4	16.4	7.4	25.0	12.0
	180	54.86	21.5	76' 10"	23.41	16.4	7.4	14.1	6.4	13.2	4.1	20.4	9.5	14.8	6.7	22.0	10.0
	190	57.91	10.5	41' 10"	12.75	14.8	6.7	12.6	5.7	11.8	3.6	17.1	7.8	13.3	6.0	20.0	9.1
210' (64.01 m)	33	10.06	81.8	215' 2"	65.58	113.8*	51.6*	113.8*	51.6*	113.8*	51.6*	113.8*	51.6*	113.8*	51.6*	113.8*	51.6*
	35	10.66	81.3	214' 11"	65.49	113.8*	51.6*	113.8*	51.6*	113.8*	51.6*	113.8*	51.6*	113.8*	51.6*	113.8*	51.6*
	40	12.19	79.9	214' 0"	65.24	108.1*	49.0*	108.1*	49.0*	108.1*	49.0*	108.1*	49.0*	108.1*	49.0*	108.1*	49.0*
	50	15.24	77.1	212' 0"	64.62	98.7*	44.8*	98.7*	44.8*	98.7*	44.8*	98.7*	44.8*	98.7*	44.8*	98.7*	44.8*
	60	18.28	74.3	209' 6"	63.84	84.0	38.1	76.0	34.5	69.5	26.9	89.7*	40.6*	81.8*	37.1*	89.7*	40.6*
	70	21.33	71.4	206' 5"	62.90	67.8	30.8	61.0	27.7	58.5	26.5	74.3	33.9	65.9	29.9	74.3	33.9
	80	24.38	68.5	202' 8"	61.79	55.9	26.4	50.3	22.8	48.0	21.8	62.0	28.1	52.0	23.5	62.0	28.1
	90	27.43	65.6	198' 6"	60.50	47.1	21.4	42.2	19.1	40.3	18.3	52.4	23.7	43.7	19.8	55.5	25.1
	100	30.48	62.5	193' 7"	59.02	40.4	18.3	36.4	16.5	34.7	15.7	45.0	20.4	37.3	16.9	48.6	22.0
	110	33.53	59.4	188' 1"	57.33	35.4	16.1	31.5	14.3	29.9	13.6	39.2	17.7	32.7	14.8	42.9*	19.4*
	120	36.58	56.2	181' 10"	55.41	31.0	14.1	27.5	12.5	26.0	11.8	34.8	15.7	28.6	12.9	38.1*	17.2*
	130	39.62	52.8	174' 8"	53.24	27.4	12.4	24.1	10.9	22.8	10.3	30.8	13.9	25.1	11.3	34.5	15.6
	140	42.67	49.3	166' 7"	50.78	24.3	11.0	21.3	9.7	20.1	9.1	27.5	12.4	22.2	10.0	31.1*	14.0*
	150	45.72	45.6	157' 5"	47.98	21.7	9.8	18.9	8.6	17.8	8.1	24.6	11.1	19.7	8.9	28.1*	12.7*
	160	48.77	41.7	146' 11"	44.79	19.4	8.8	16.8	7.6	15.8	7.2	22.2	10.0	17.6	7.9	25.4*	11.5*
	170	51.82	37.4	134' 10"	41.10	17.4	7.9	15.0	6.8	14.0	6.4	20.0	9.0	15.7	7.1	23.1*	10.4*
	180	54.86	32.6	120' 7"	36.75	15.7	7.1	13.4	6.1	12.5	5.7	18.1	8.2	14.1	6.3	21.1*	9.5*
	190	57.91	27.2	103' 2"	31.45	14.1	6.4	11.9	5.4	11.1	5.0	16.4	7.4	12.6	5.7	19.2*	8.7*
200	60.96	20.4	80' 6"	24.53	12.7	5.8	10.7	4.9	9.9	4.5	14.9	6.7	11.3	5.1	17.6*	7.9*	
210	64.01	10.0	43' 7"	13.30	11.5	5.2	9.5	4.3	8.8	4.0	13.5	6.1	10.1	4.6	15.7*	7.2*	
230' (70.10 m)	36	10.97	81.8	234' 11"	71.61	91.0*	41.3*	91.0*	41.3*	91.0*	41.3*	91.0*	41.3*	91.0*	41.3*	91.0*	41.3*
	40	12.19	80.8	234' 4"	71.42	90.4*	41.0*	90.4*	41.0*	90.4*	41.0*	90.4*	41.0*	90.4*	41.0*	90.4*	41.0*
	50	15.24	78.3	232' 6"	70.86	87.1*	39.5*	87.1*	39.5*	87.1*	39.5*	87.1*	39.5*	87.1*	39.5*	87.1*	39.5*
	60	18.28	75.7	230' 2"	70.15	79.4*	36.0*	75.4	34.2	58.6	26.6	79.4*	36.0*	77.8	35.3	79.4*	36.0*
	70	21.33	73.1	227' 5"	69.30	67.1*	30.4	60.5	27.4	47.3	21.5	67.5*	30.6*	62.5	28.2	67.5*	30.6*
	80	24.38	70.5	224' 1"	68.30	55.2	25.0	49.6	22.5	42.2	19.5	59.9*	27.2*	51.3	23.2	59.9*	27.2*
	90	27.43	67.8	220' 4"	67.14	46.4	21.0	41.5	18.8	39.5	18.0	51.7	23.4	43.0	19.5	53.9*	24.4*
	100	30.48	65.1	215' 11"	65.81	39.6	18.0	35.8	16.2	34.0	15.4	44.3	20.0	37.1	16.8	47.6*	21.5*
	110	33.53	62.3	211' 0"	64.31	34.7	15.7	30.8	14.0	29.2	13.2	38.4	17.4	32.0	14.5	41.9*	18.9*
	120	36.58	59.5	205' 5"	62.61	30.3	13.7	26.8	12.2	26.3	11.5	34.1	15.4	27.9	12.6	37.1*	16.8*
	130	39.62	56.5	199' 2"	60.70	26.7	12.1	23.4	10.6	22.1	10.0	30.1	13.6	24.4	11.0	33.6*	15.2*
	140	42.67	53.5	192' 2"	58.57	23.6	10.7	20.6	9.3	19.4	8.8	26.8	12.1	21.5	9.7	30.1*	13.6*
	150	45.72	50.3	184' 4"	56.18	20.9	9.5	18.2	8.3	17.0	7.7	23.9	10.8	19.0	8.6	27.1*	12.3*
	160	48.77	47.0	175' 6"	53.50	18.7	8.5	16.1	7.3	15.0	6.8	21.4	9.7	16.9	7.6	24.5*	11.1*

(continued)

© Capacities shown in thousands of pounds and kilograms.
 © Measured vertically from center of boom head sheaves to ground with machine standing on tires.
 © Capacities for 360° swing applicable only when front center jack and rear outriggers are set in proper working position.



PORTLAND OFFICE: 503.283.3111
 SEATTLE OFFICE: 206.784.1054
 WWW.NESSCAMPBELL.COM

HC-268 open throat boom				Capacities on outriggers only											
Length	Radius (meters)		Boom point height (Feet)	"AB" upper counterweight only		"A" upper and "A" bumper counterweights		"AB" upper and "AB" bumper counterweights		"AB" upper and "AB" bumper counterweights		"AB" upper and "AB" bumper counterweights			
	Feet	Deg.		Over rear	Over side and 360° swing	Over rear	Over side and 360° swing	Over rear	Over side and 360° swing	Over rear	Over side and 360° swing	Over rear	Over side and 360° swing		
			Lbs.	kg	Lbs.	kg	Lbs.	kg	Lbs.	kg	Lbs.	kg	Lbs.	kg	
230' (70.10 m)	170	51.82	16.7	7.5	14.2	6.4	13.3	6.0	19.3	8.7	15.0	6.8	22.2*	10.0*	
	180	54.86	39.8	6.7	12.6	5.7	11.7	5.3	17.4	7.8	13.3	6.0	20.1*	9.1*	
	190	57.91	35.7	6.0	11.2	5.0	10.4	4.6	15.7	7.1	11.9	5.3	18.3*	8.3*	
	200	60.96	31.2	5.4	9.9	4.5	9.1	4.1	14.2	6.4	10.6	4.7	16.7*	7.5*	
	210	64.01	25.9	4.8	8.8	3.9	8.0	3.6	12.8	5.8	9.4	4.2	15.1*	6.8*	
	220	67.06	19.5	4.3	7.8	3.5	7.1	3.1	11.6	5.2	8.4	3.2	13.6*	6.2*	
	230	70.10	9.5	3.9	6.9	3.1	6.2	2.7	10.5	4.7	7.4	3.3	12.1*	5.6*	
	38	11.58	82.0	34.0*	15.4	7.0	15.8	7.1	25.6	11.6	36.7	16.6	59.8*	27.1*	
	40	12.19	81.5	34.0*	15.4	7.0	15.8	7.1	25.6	11.6	36.7	16.6	59.8*	27.1*	
	50	15.24	79.2	32.3*	14.6	6.6	15.2	6.9	24.6	11.1	35.3	15.9	57.2*	25.9*	
60	18.29	76.9	31.7*	14.2	6.4	14.8	6.7	24.1	10.9	34.8	15.7	56.7*	25.6*		
70	21.34	74.5	29.3*	13.3	6.0	14.2	6.4	23.6	10.7	34.3	15.5	56.2*	25.4*		
80	24.38	72.1	27.4*	12.4	5.6	13.6	6.1	23.1	10.5	33.8	15.3	55.7*	25.1*		
90	27.43	69.7	25.7*	11.5	5.2	13.0	5.9	22.6	10.2	33.3	15.1	55.2*	24.9*		
100	30.48	67.2	24.1*	10.8	4.9	12.4	5.6	22.1	10.0	32.8	14.9	54.7*	24.6*		
110	33.53	64.7	22.5*	10.1	4.6	11.8	5.3	21.6	9.7	32.3	14.7	54.2*	24.3*		
120	36.58	62.1	21.0*	9.4	4.3	11.2	5.0	21.1	9.4	31.8	14.5	53.7*	24.0*		
130	39.62	59.5	19.5*	8.7	4.0	10.6	4.7	20.6	9.1	31.3	14.3	53.2*	23.7*		
140	42.67	56.8	18.0*	8.0	3.7	10.0	4.4	20.1	8.8	30.8	14.1	52.7*	23.4*		
150	45.72	54.0	16.5*	7.3	3.4	9.4	4.1	19.6	8.5	30.3	13.9	52.2*	23.1*		
160	48.77	51.1	15.0*	6.6	3.1	8.8	3.8	19.1	8.2	29.8	13.7	51.7*	22.8*		
170	51.82	48.1	13.5*	5.9	2.8	8.2	3.5	18.6	7.9	29.3	13.5	51.2*	22.5*		
180	54.86	45.0	12.0*	5.2	2.5	7.6	3.2	18.1	7.6	28.8	13.3	50.7*	22.2*		
190	57.91	41.6	10.5*	4.5	2.2	7.0	2.9	17.6	7.3	28.3	13.1	50.2*	21.9*		
200	60.96	38.1	9.0*	3.8	1.9	6.4	2.6	17.1	7.0	27.8	12.9	49.7*	21.6*		
210	64.01	34.2	7.5*	3.1	1.6	5.8	2.3	16.6	6.7	27.3	12.7	49.2*	21.3*		
220	67.06	29.8	6.0*	2.4	1.3	5.2	2.0	16.1	6.4	26.8	12.5	48.7*	21.0*		
230	70.10	24.9	4.5*	1.6	0.7	4.6	1.6	15.6	6.1	26.3	12.3	48.2*	20.7*		
240	73.15	18.7	3.0*	1.0	0.4	4.0	1.3	15.1	5.8	25.8	12.1	47.7*	20.4*		
250	76.20	9.1	1.5*	0.4	0.1	3.4	0.7	14.6	5.5	25.3	11.9	47.2*	20.1*		
270' (82.30 m)	41	12.50	81.9	27.4*	12.4	5.6	12.4	5.6	22.1	10.0	32.8	14.9	54.7*	24.6*	
50	15.24	80.0	27.4*	12.4	5.6	12.4	5.6	22.1	10.0	32.8	14.9	54.7*	24.6*		
60	18.29	77.8	26.0*	11.8	5.4	11.8	5.4	21.6	9.7	32.3	14.7	54.2*	24.3*		
70	21.34	75.7	24.8*	11.2	5.1	11.2	5.1	21.1	9.4	31.8	14.5	53.7*	24.0*		
80	24.38	73.5	22.9*	10.5	4.8	10.5	4.8	20.6	9.1	31.3	14.3	53.2*	23.7*		
90	27.43	71.2	21.2*	9.8	4.5	9.8	4.5	20.1	8.8	30.8	14.1	52.7*	23.4*		
100	30.48	69.0	19.6*	9.1	4.2	9.1	4.2	19.6	8.5	30.3	13.9	52.2*	23.1*		
110	33.53	66.7	18.0*	8.4	3.9	8.4	3.9	19.1	8.2	29.8	13.7	51.7*	22.8*		
120	36.58	64.4	16.5*	7.7	3.6	7.7	3.6	18.6	7.9	29.3	13.5	51.2*	22.5*		
130	39.62	62.0	15.0*	7.0	3.3	7.0	3.3	18.1	7.6	28.8	13.3	50.7*	22.2*		
140	42.67	59.5	13.5*	6.3	3.0	6.3	3.0	17.6	7.3	28.3	13.1	50.2*	21.9*		
150	45.72	57.1	12.0*	5.6	2.7	5.6	2.7	17.1	7.0	27.8	12.9	49.7*	21.6*		
160	48.77	54.5	10.5*	4.9	2.4	4.9	2.4	16.6	6.7	27.3	12.7	49.2*	21.3*		
170	51.82	51.8	9.0*	4.2	2.1	4.2	2.1	16.1	6.4	26.8	12.5	48.7*	21.0*		
180	54.86	49.1	7.5*	3.5	1.8	3.5	1.8	15.6	6.1	26.3	12.3	48.2*	20.7*		
190	57.91	46.2	6.0*	2.8	1.5	2.8	1.5	15.1	5.8	25.8	12.1	47.7*	20.4*		
200	60.96	43.2	4.5*	2.1	1.2	2.1	1.2	14.6	5.5	25.3	11.9	47.2*	20.1*		
210	64.01	40.0	3.0*	1.4	0.9	1.4	0.9	14.1	5.2	24.8	11.7	46.7*	19.8*		
220	67.06	36.6	1.5*	0.7	0.4	1.4	0.7	13.6	4.9	24.3	11.5	46.2*	19.5*		
230	70.10	32.8	0.0	0.0	0.0	1.3	0.6	13.1	4.6	23.8	11.3	45.7*	19.2*		

(continued)

① Capacities shown in thousands of pounds and kilograms.
 ② Measured vertically from center of boom head sheaves to ground with machine standing on tires.
 ③ Capacities for 360° swing applicable only when front center jack and front and rear outriggers are set in proper working position.



HC-268 open throat boom				Capacities ① on outriggers only													
Length	Radius	Angle	Boom height Feet	"AB" upper counterweight only		"A" upper and "A" bumper counterweights		"AB" upper and "AB" bumper counterweights		Over side and 360° swing ③		Over rear		Over side and 360° swing ③		Over rear	
				Lbs.	kg	Lbs.	kg	Lbs.	kg	Lbs.	kg	Lbs.	kg	Lbs.	kg	Lbs.	kg
240	73.15	28.7	136' 11"	41.74	19	3.7	1.6	50.7*	23.0*	4.9	2.2	50.7*	23.0*	50.7*	23.0*	42.5*	19.3*
250	76.20	23.9	116' 8"	35.57	16	3.0	1.3	49.8*	22.6*	4.1	1.8	49.8*	22.6*	42.2*	19.1*	42.2*	19.1*
260	79.25	18.0	90' 7"	27.61	13	2.3	1.0	48.8*	22.2*	3.4	1.5	48.8*	22.2*	41.4*	18.8*	41.4*	18.8*
270	82.30	8.8	48' 6"	14.79	2.9	—	—	45.2*	20.5*	3.4	1.5	45.2*	20.5*	38.3*	17.4*	38.3*	17.4*
290' (88.39 m)	44	13.41	294' 5"	89.73	50.7*	50.7*	23.0*	50.7*	23.0*	50.7*	23.0*	50.7*	23.0*	50.7*	23.0*	50.7*	23.0*
	50	15.24	293' 6"	89.45	49.8*	49.8*	22.6*	49.8*	22.6*	49.8*	22.6*	49.8*	22.6*	49.8*	22.6*	49.8*	22.6*
	60	18.28	281' 8"	88.90	48.8*	48.8*	22.2*	48.8*	22.2*	48.8*	22.2*	48.8*	22.2*	48.8*	22.2*	48.8*	22.2*
	70	21.33	269' 6"	88.24	45.2*	45.2*	20.5*	45.2*	20.5*	45.2*	20.5*	45.2*	20.5*	45.2*	20.5*	45.2*	20.5*
	80	24.38	246' 11"	87.46	41.8*	41.8*	19.0*	41.8*	19.0*	41.8*	19.0*	41.8*	19.0*	41.8*	19.0*	41.8*	19.0*
	90	27.43	226' 0"	86.56	38.7*	38.7*	17.5*	38.7*	17.5*	38.7*	17.5*	38.7*	17.5*	38.7*	17.5*	38.7*	17.5*
	100	30.48	207' 7"	85.54	34.0*	34.0*	15.4*	34.0*	15.4*	34.0*	15.4*	34.0*	15.4*	34.0*	15.4*	34.0*	15.4*
	110	33.53	188' 4"	84.40	30.9*	30.9*	14.0*	30.9*	14.0*	30.9*	14.0*	30.9*	14.0*	30.9*	14.0*	30.9*	14.0*
	120	36.58	166' 2"	83.12	28.1*	28.1*	12.7*	28.1*	12.7*	28.1*	12.7*	28.1*	12.7*	28.1*	12.7*	28.1*	12.7*
	130	39.62	144' 1"	81.71	24.4*	24.4*	11.0*	24.4*	11.0*	24.4*	11.0*	24.4*	11.0*	24.4*	11.0*	24.4*	11.0*
	140	42.67	123' 0"	80.16	21.3*	21.3*	9.6*	21.3*	9.6*	21.3*	9.6*	21.3*	9.6*	21.3*	9.6*	21.3*	9.6*
	150	45.72	105' 5"	78.45	18.6*	18.6*	8.4*	18.6*	8.4*	18.6*	8.4*	18.6*	8.4*	18.6*	8.4*	18.6*	8.4*
	160	48.77	93' 2"	76.57	16.3*	16.3*	7.4*	16.3*	7.4*	16.3*	7.4*	16.3*	7.4*	16.3*	7.4*	16.3*	7.4*
	170	51.82	84' 6"	74.52	14.3*	14.3*	6.5*	14.3*	6.5*	14.3*	6.5*	14.3*	6.5*	14.3*	6.5*	14.3*	6.5*
	180	54.86	77' 1"	72.28	12.6*	12.6*	5.7*	12.6*	5.7*	12.6*	5.7*	12.6*	5.7*	12.6*	5.7*	12.6*	5.7*
	190	57.91	71' 4"	69.83	11.0*	11.0*	4.9*	11.0*	4.9*	11.0*	4.9*	11.0*	4.9*	11.0*	4.9*	11.0*	4.9*
200	60.96	67' 4"	67.14	9.6*	9.6*	4.3*	9.6*	4.3*	9.6*	4.3*	9.6*	4.3*	9.6*	4.3*	9.6*	4.3*	
210	64.01	64' 5"	64.18	8.4*	8.4*	3.7*	8.4*	3.7*	8.4*	3.7*	8.4*	3.7*	8.4*	3.7*	8.4*	3.7*	
220	67.06	61' 6"	60.92	7.2*	7.2*	3.2*	7.2*	3.2*	7.2*	3.2*	7.2*	3.2*	7.2*	3.2*	7.2*	3.2*	
230	70.10	59' 0"	57.30	6.2*	6.2*	2.8*	6.2*	2.8*	6.2*	2.8*	6.2*	2.8*	6.2*	2.8*	6.2*	2.8*	
240	73.15	57' 8"	52.23	5.3*	5.3*	2.3*	5.3*	2.3*	5.3*	2.3*	5.3*	2.3*	5.3*	2.3*	5.3*	2.3*	
250	76.20	56' 4"	48.62	4.4*	4.4*	2.0*	4.4*	2.0*	4.4*	2.0*	4.4*	2.0*	4.4*	2.0*	4.4*	2.0*	
260	79.25	56' 4"	43.27	3.6*	3.6*	1.7*	3.6*	1.7*	3.6*	1.7*	3.6*	1.7*	3.6*	1.7*	3.6*	1.7*	
270	82.30	56' 4"	36.84	2.9*	2.9*	1.3*	2.9*	1.3*	2.9*	1.3*	2.9*	1.3*	2.9*	1.3*	2.9*	1.3*	
280	85.34	56' 4"	28.55	2.3*	2.3*	1.0*	2.3*	1.0*	2.3*	1.0*	2.3*	1.0*	2.3*	1.0*	2.3*	1.0*	
290	88.39	56' 4"	15.25	—	—	—	—	—	—	—	—	—	—	—	—	—	—
310' (94.48 m)	47	14.33	314' 2"	95.76	42.5*	42.5*	19.3*	42.5*	19.3*	42.5*	19.3*	42.5*	19.3*	42.5*	19.3*	42.5*	19.3*
	50	15.24	313' 8"	95.63	42.2*	42.2*	19.1*	42.2*	19.1*	42.2*	19.1*	42.2*	19.1*	42.2*	19.1*	42.2*	19.1*
	60	18.28	294' 0"	95.11	41.4*	41.4*	18.8*	41.4*	18.8*	41.4*	18.8*	41.4*	18.8*	41.4*	18.8*	41.4*	18.8*
	70	21.33	275' 0"	94.49	38.3*	38.3*	17.4*	38.3*	17.4*	38.3*	17.4*	38.3*	17.4*	38.3*	17.4*	38.3*	17.4*
	80	24.38	256' 7"	93.76	34.5*	34.5*	15.6*	34.5*	15.6*	34.5*	15.6*	34.5*	15.6*	34.5*	15.6*	34.5*	15.6*
	90	27.43	237' 7"	92.93	30.4*	30.4*	13.8*	30.4*	13.8*	30.4*	13.8*	30.4*	13.8*	30.4*	13.8*	30.4*	13.8*
	100	30.48	218' 10"	91.98	28.1*	28.1*	12.7*	28.1*	12.7*	28.1*	12.7*	28.1*	12.7*	28.1*	12.7*	28.1*	12.7*
	110	33.53	201' 4"	90.92	26.0*	26.0*	11.8*	26.0*	11.8*	26.0*	11.8*	26.0*	11.8*	26.0*	11.8*	26.0*	11.8*
	120	36.58	187' 5"	89.74	24.1*	24.1*	10.9*	24.1*	10.9*	24.1*	10.9*	24.1*	10.9*	24.1*	10.9*	24.1*	10.9*
	130	39.62	176' 2"	88.44	22.3*	22.3*	10.1*	22.3*	10.1*	22.3*	10.1*	22.3*	10.1*	22.3*	10.1*	22.3*	10.1*
	140	42.67	166' 6"	87.01	20.6*	20.6*	9.3*	20.6*	9.3*	20.6*	9.3*	20.6*	9.3*	20.6*	9.3*	20.6*	9.3*
	150	45.72	157' 4"	85.44	18.5*	18.5*	8.7*	18.5*	8.7*	18.5*	8.7*	18.5*	8.7*	18.5*	8.7*	18.5*	8.7*
	160	48.77	149' 8"	83.73	17.7*	17.7*	8.0*	17.7*	8.0*	17.7*	8.0*	17.7*	8.0*	17.7*	8.0*	17.7*	8.0*
	170	51.82	143' 7"	81.86	16.2*	16.2*	7.3*	16.2*	7.3*	16.2*	7.3*	16.2*	7.3*	16.2*	7.3*	16.2*	7.3*
	180	54.86	138' 11"	79.83	15.4*	15.4*	6.4*	15.4*	6.4*	15.4*	6.4*	15.4*	6.4*	15.4*	6.4*	15.4*	6.4*
	190	57.91	134' 8"	77.62	14.2*	14.2*	5.6*	14.2*	5.6*	14.2*	5.6*	14.2*	5.6*	14.2*	5.6*	14.2*	5.6*
200	60.96	131' 0"	75.22	12.5*	12.5*	4.9*	12.5*	4.9*	12.5*	4.9*	12.5*	4.9*	12.5*	4.9*	12.5*	4.9*	
210	64.01	128' 2"	72.60	11.0*	11.0*	4.3*	11.0*	4.3*	11.0*	4.3*	11.0*	4.3*	11.0*	4.3*	11.0*	4.3*	
220	67.06	125' 7"	69.75	9.6*	9.6*	3.8*	9.6*	3.8*	9.6*	3.8*	9.6*	3.8*	9.6*	3.8*	9.6*	3.8*	
230	70.10	123' 7"	66.63	8.4*	8.4*	3.3*	8.4*	3.3*	8.4*	3.3*	8.4*	3.3*	8.4*	3.3*	8.4*	3.3*	
240	73.15	121' 4"	63.19	7.3*	7.3*	2.8*	7.3*	2.8*	7.3*	2.8*	7.3*	2.8*	7.3*	2.8*	7.3*	2.8*	
250	76.20	119' 4"	59.39	6.3*	6.3*	2.4*	6.3*	2.4*	6.3*	2.4*	6.3*	2.4*	6.3*	2.4*	6.3*	2.4*	

(continued)

- ① Capacities shown in thousands of pounds and kilograms.
- ② Measured vertically from center of boom head sheaves to ground with machine standing on tires.
- ③ Capacities for 360° swing applicable only when front center jack and front and rear outriggers are set in proper working position.



PORTLAND OFFICE: 503.283.3111
 SEATTLE OFFICE: 206.784.1054
WWW.NESSCAMPBELL.COM

HC-268 lifting crane capacities

HC-268 open throat boom				Capacities [ⓐ] on outriggers only										
Length	Radius Feet	Angle Deg.	Boom point height [ⓑ] Feet	"AB" upper counterweight only		"A" upper and "A" bumper counterweights		"AB" upper and "AB" bumper counterweights		Over side and 360° swing [ⓒ]				
				Lbs.	kg	Lbs.	kg	Lbs.	kg	Lbs.	kg	Lbs.	kg	
310' (94.48 m)	260	79.25	34.1	180'	11"	55.14	20	4.5	20	4.5	20	4.5	2.4	1.0
	270	82.30	30.6	165'	1"	50.32	16	3.7	16	3.7	16	3.7	—	—
	280	85.34	26.7	146'	10"	44.75	13	3.0	13	3.0	13	3.0	—	—
	290	88.39	22.3	124'	11"	38.06	10	2.3	10	2.3	10	2.3	—	—
	300	91.44	16.8	96'	8"	29.47	—	—	—	—	—	—	—	—
	310	94.48	8.2	51'	6"	15.69	—	—	—	—	—	—	—	—
	50	15.24	81.8	334'	0"	101.79	—	—	—	—	—	—	—	—
	60	18.28	80.1	332'	5"	101.30	—	—	—	—	—	—	—	—
	70	21.33	78.3	330'	6"	100.72	—	—	—	—	—	—	—	—
	80	24.38	76.5	328'	2"	100.04	—	—	—	—	—	—	—	—
90	27.43	74.7	325'	8"	99.26	—	—	—	—	—	—	—	—	
100	30.48	72.9	322'	10"	98.38	—	—	—	—	—	—	—	—	
110	33.53	71.1	319'	6"	97.39	—	—	—	—	—	—	—	—	
120	36.58	69.3	315'	11"	96.29	—	—	—	—	—	—	—	—	
130	39.62	67.4	311'	9"	95.08	—	—	—	—	—	—	—	—	
140	42.67	65.5	307'	7"	93.75	—	—	—	—	—	—	—	—	
150	45.72	63.6	302'	10"	92.30	—	—	—	—	—	—	—	—	
160	48.77	61.6	297'	7"	90.72	—	—	—	—	—	—	—	—	
170	51.82	59.6	292'	0"	89.01	—	—	—	—	—	—	—	—	
180	54.86	57.6	285'	11"	87.15	—	—	—	—	—	—	—	—	
190	57.91	55.5	279'	4"	85.13	—	—	—	—	—	—	—	—	
200	60.96	53.4	272'	2"	82.96	—	—	—	—	—	—	—	—	
210	64.01	51.2	264'	5"	80.60	—	—	—	—	—	—	—	—	
220	67.06	48.9	256'	1"	78.05	—	—	—	—	—	—	—	—	
230	70.10	46.6	247'	0"	75.28	—	—	—	—	—	—	—	—	
240	73.15	44.1	237'	1"	72.27	—	—	—	—	—	—	—	—	
250	76.20	41.6	226'	4"	68.98	—	—	—	—	—	—	—	—	
260	79.25	38.9	214'	6"	65.38	—	—	—	—	—	—	—	—	
270	82.30	36.0	210'	6"	61.40	—	—	—	—	—	—	—	—	
280	85.34	33.0	196'	11"	56.97	—	—	—	—	—	—	—	—	
290	88.39	29.6	170'	6"	51.96	—	—	—	—	—	—	—	—	

ⓐ Capacities shown in thousands of pounds and kilograms.
 ⓑ Measured vertically from center of boom head sheaves to ground with machine standing on tires.
 ⓒ Capacities for 360° swing applicable only when front center jack and rear outriggers are set in proper working position.

- Notes — lifting crane capacities**
- The capacities included in this chart are the maximum allowable, and are based on machine standing level on firm supporting surface under ideal job conditions. Capacities are based on 85% of minimum tipping loads unless marked with an asterisk (*).
 a. Asterisk indicates capacities are based on factors other than those which would cause a tipping condition.
 - Capacities are based on freely suspended loads and make no allowance for such factors as the effect of wind, supporting surface conditions, inflation of tires, and operating speeds. Operator must reduce load ratings accordingly to take such condition into account. Deduction from rated capacities must be made for weight of jib, hook block, ball/hook, sling, spreader bar or other suspended gear.
 - Boom midpoint suspension pendants required for boom lengths exceeding 240' (73.15 m).
 - For lifting 500,000 lb. (226,800 kg) capacity, 14-part load hoist line (1-1/8" - 2.9mm - diameter, type "N" wire rope) is required.
 - Use hanger block.
 - Jib cannot be used on boom longer than 300' (91.44 m).
 - Refer to charts page 1 when rigging machine with boom and boom plus jib.
 - Machine equipped with "A" or "AB" upper counterweight — do not swing over side until outriggers have been set.
 - Boom live mast must be used for all capacities on this chart.
 - Boom live mast may be used as short boom for machine assembly/disassembly only — it is not to be used for general lift crane service.
 a. Maximum lifting capacity of mast is 85,000 lbs. (38,556 kg) from 12' (3.66 m) to 28' (8.53 m) maximum radius with machine on outriggers (front and rear).
 b. Minimum 3-part load hoist line — 1" (25 mm) or 1-1/8" (29 mm) diameter, Type "N" wire rope — off rear main operating drum only — required to lift 85,000 lbs. (38,556 kg).
 - Refer to operator's manual for boom make up and counterweighting instructions.
 - When making lift on outriggers, machine must be level and supported on fully extended and set outriggers with tires free of supporting surface.
 - Capacities apply only to the machine as originally manufactured and normally equipped by Link-Belt Construction Equipment Company.

- Least stable position is over side.
- When handling loads on main load hoist line, with jib mounted on boom, reduce rated boom capacities as follows to compensate for jib weights —
 30' (9.14 m) — 2,600 lbs. (1,179 kg)
 50' (15.24 m) — 3,300 lbs. (1,496 kg)
 70' (21.34 m) — 4,000 lbs. (1,814 kg)
 90' (27.43 m) — 4,700 lbs. (2,132 kg)
- Refer to operator's manual for boom make up and counterweighting instructions.
- When making lift on outriggers, machine must be level and supported on fully extended and set outriggers with tires free of supporting surface.
- Capacities apply only to the machine as originally manufactured and normally equipped by Link-Belt Construction Equipment Company.

(continued)



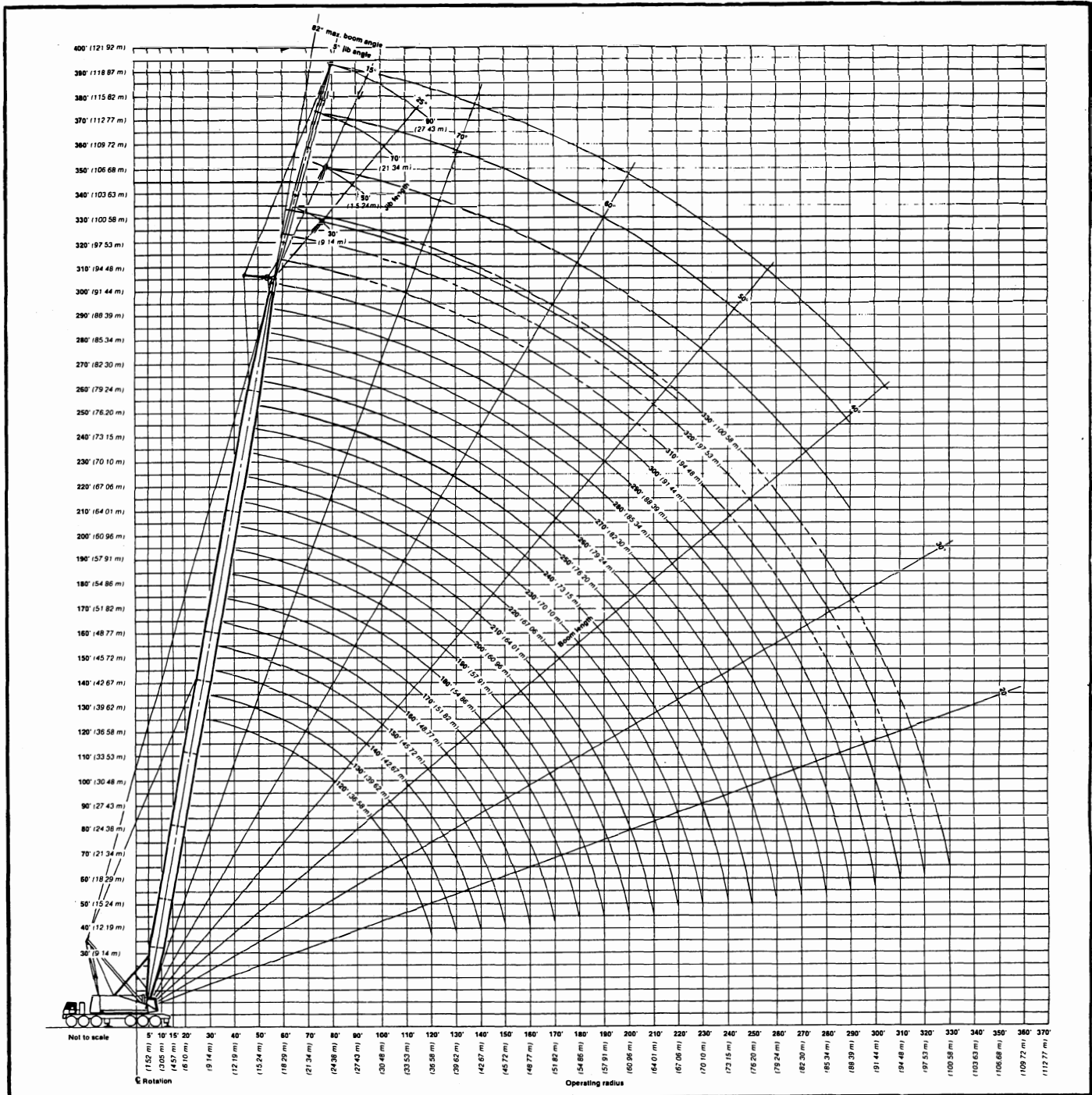
HC-268 lifting crane capacities — open throat boom

Boom — tubular; 80" (2.03 m) wide, 68" (1.73 m) deep with open throat top section, 1¼" (32 mm) diameter boom pendants, boom live mast, and boom midpoint suspension pendants as required.

Jib — tubular; 32" (0.81 m) wide, 24" (0.61 m) deep.

Mounting — rubber tire mobile base: Link-Belt; 12 × 6 drive, 288" (7.32 m) wheelbase, 11' 10" (3.61 m) wide.

Counterweights — Refer to charts page 1.



Link-Belt® is a registered trademark.

We are constantly improving our products and therefore reserve the right to change designs and specifications.

Link-Belt Construction Equipment Company Lexington, Kentucky



PORTLAND OFFICE: 503.283.3111
 SEATTLE OFFICE: 206.784.1054
WWW.NESSCAMPBELL.COM

Link-Belt® HC-268 jib capacities — open throat boom (U.S. units)

Refer to Notes page 5.

Boom — tubular; 80" (2.03 m) wide, 68" (1.73 m) deep with open throat top section, 1¼" (32 mm) diameter boom pendants, boom live mast, and boom midpoint suspension pendants as required.

Jib — tubular; 32" (0.81 m) wide, 24" (0.61 m) deep.

Mounting — rubber tire mobile base, LINK-BELT; 12 x 6 drive, 288" (7.32 m) wheelbase, 11' 10" (3.61 m)-wide.

Counterweights — 85,000 lbs. (38 556 kg) "AB" upper and 11,400 lbs. (3 171 kg) "A" bumper for boom lengths 60' (18.29 m) through 280' (85.34 m); 85,000 lbs. (38 556 kg) "AB" upper and 26,700 lbs. (12 111 kg) "AB" bumper counterweight for boom lengths 290' (88.39 m) through 300' (91.44 m).

Boom length	Load radius	Capacities ① — over side and 360° swing											
		30' jib			50' jib			70' jib			90' jib		
		Jib angles to boom (jib offset degrees)											
		5°	15°	25°	5°	15°	25°	5°	15°	25°	5°	15°	25°
Feet	Feet	Pounds			Pounds			Pounds			Pounds		
60'	19	40.0*											
	20	40.0*											
	25	40.0*											
	30	40.0*	40.0*		32.0*								
	35	40.0*	40.0*	40.0*	32.0*	31.5*			21.8*			13.8*	
	40	40.0*	40.0*	40.0*	32.0*	30.8*			21.5*			13.5*	
	50	40.0*	40.0*	36.9*	32.0*	29.4*	29.4*		20.4*	20.4*	18.4*	12.9*	12.2*
	60	40.0*	38.6*	36.2*	29.4*	28.8*	23.2*		19.5*	18.5*	17.5*	12.3*	11.4*
	70	37.8*	36.9*	32.6*	28.7*	25.7*	20.7*		18.5*	17.7*	15.5*	11.4*	10.6*
	80	36.9*	34.1*		26.9*	22.8*	18.8*		17.7*	16.9*	14.0*	10.6*	10.2*
	90				23.7*	20.6*	17.3*		16.8*	15.6*	12.7*	10.2*	9.9*
	100				21.2*	18.9*			15.8*	14.1*	11.7*	9.9*	9.6*
	110								14.9*	13.0*	10.9*	9.5*	9.2*
	120								13.8*	12.0*		9.1*	8.8*
130											8.6*	8.1*	
140											7.8*	7.4*	
70'	20	40.0*			32.0*								
	25	40.0*			32.0*								
	30	40.0*	40.0*		32.0*				21.9*				
	35	40.0*	40.0*	40.0*	32.0*	31.7*			21.6*			13.9*	
	40	40.0*	40.0*	40.0*	32.0*	31.1*			21.3*			13.6*	
	50	40.0*	40.0*	37.9*	31.3*	29.8*	27.4*		20.6*	19.7*		13.0*	12.3*
	60	40.0*	40.0*	36.8*	30.0*	29.0*	24.1*		19.8*	18.8*	17.8*	12.5*	11.6*
	70	40.0*	36.9*	34.4*	29.1*	27.3*	21.6*		18.9*	18.0*	16.0*	11.7*	10.8*
	80	36.9*	36.8*	31.6*	28.4*	24.3*	19.7*		18.1*	17.2*	14.5*	11.0*	10.3*
	90	36.9*	33.4*		25.8*	21.9*	18.1*		17.3*	16.4*	13.2*	10.3*	10.0*
	100				23.0*	20.1*	16.9*		16.5*	14.9*	12.2*	10.0*	9.7*
	110				20.9*				15.6*	13.7*	11.4*	9.7*	9.4*
	120								14.8*	12.7*	10.7*	9.4*	9.1*
	130								13.6*			9.0*	8.6*
140											8.5*	8.0*	
90'	25	40.0*			32.0*								
	30	40.0*			32.0*								
	35	40.0*	40.0*		32.0*				21.8*				
	40	40.0*	40.0*	40.0*	32.0*	31.5*			21.5*			13.8*	
	50	40.0*	40.0*	40.0*	32.0*	30.4*			21.0*			13.3*	
	60	40.0*	40.0*	36.7*	31.0*	29.4*	25.7*		20.4*	20.0*	18.1*	12.8*	11.9*
	70	40.0*	40.0*	36.8*	29.9*	28.9*	23.2*		19.6*	18.4*	16.8*	12.2*	11.2*
	80	40.0*	37.1*	34.8*	29.1*	27.0*	21.2*		18.8*	17.8*	15.3*	11.6*	10.5*
	90	38.1*	36.8*	32.3*	28.6*	24.5*	19.6*		18.1*	17.2*	14.1*	10.9*	10.2*
	100	36.9*	35.0*		26.8*	22.4*	18.3*		17.4*	16.4*	13.1*	10.3*	10.0*
	110	34.8*			24.2*	20.7*	17.3*		16.7*	15.1*	12.2*	10.1*	9.7*
	120				22.1*	19.3*			15.9*	14.0*	11.5*	9.8*	9.4*
	130				20.4*				15.1*	13.1*	10.9*	9.5*	9.1*
	140								14.3*	12.3*		9.2*	8.8*
150								13.4*			8.8*	8.3*	
160											8.3*	7.7*	
170											7.6*	7.3*	
110'	30	40.0*			32.0*				21.9*				
	35	40.0*			32.0*				21.7*				
	40	40.0*	40.0*		32.0*	31.8*			21.2*			13.9*	
	50	40.0*	40.0*	40.0*	32.0*	30.9*			20.2*	20.2*		13.5*	
	60	40.0*	40.0*	39.1*	31.7*	29.9*	29.3*		20.7*	19.5*	18.3*	13.0*	12.1*
	70	40.0*	40.0*	36.7*	30.8*	29.2*	27.0*		20.1*	18.9*	17.5*	12.6*	11.5*
	80	40.0*	40.0*	36.8*	29.8*	28.8*	24.5*		19.4*	18.2*	16.1*	12.0*	10.9*
	90	40.0*	37.6*	35.0*	29.1*	26.8*	20.9*		18.7*	17.7*	14.9*	11.4*	10.4*
	100	39.6*	36.8*	32.8*	28.6*	24.6*	19.6*		18.1*	17.1*	13.8*	10.8*	10.2*
	110	36.2	36.3*	31.1*	27.6*	22.7*	18.4*		17.5*	16.4*	12.9*	10.3*	9.9*
	120	32.1	32.1		25.1*	21.2*	17.5*		16.9*	15.2*	12.2*	10.1*	9.7*
	130				23.1*	19.9*			16.2*	14.2*	11.6*	9.9*	9.5*
	140				21.4*	18.8*			15.5*	13.4*	11.0*	9.6*	9.2*
	150				20.0*				14.9*	12.6*		9.3*	8.9*

① Capacities shown in thousand pounds.

(Continued)

Caution: This material is supplied for reference only. Operator must refer to in-cab capacity plate to determine allowable machine lifting capacities and operation procedures.



PORTLAND OFFICE: 503.283.3111
 SEATTLE OFFICE: 206.784.1054
WWW.NESSCAMPBELL.COM

Boom length	Load radius	Capacities — over side and 360° swing												
		30' jib			50' jib			70' jib			90' jib			
		Jib angles to boom (jib offset degrees)												
		5°	15°	25°	5°	15°	25°	5°	15°	25°	5°	15°	25°	
Feet	Feet	Pounds			Pounds			Pounds			Pounds			
110'	160							14.0*	12.0*		9.0*	8.5*	7.4*	
	170							13.2*			8.6*	8.0*		
	180										8.1*			
130'	30	40.0*			32.0*			21.8*			13.6*			
	35	40.0*	40.0*		32.0*	31.2*	29.4*	21.4*	20.4*		13.2*	12.3*		
	40	40.0*	40.0*	40.0*	32.0*	30.4*	28.1*	21.0*	19.8*	18.4*	12.8*	11.7*		
	50	40.0*	40.0*	40.0*	32.0*	30.4*	28.1*	21.0*	19.8*	18.4*	12.8*	11.7*		
	60	40.0*	40.0*	40.0*	32.0*	30.4*	28.1*	21.0*	19.8*	18.4*	12.8*	11.7*		
	70	40.0*	40.0*	38.0*	31.4*	29.6*	25.7*	20.5*	19.2*	18.0*	16.7*	12.4*	11.2*	
	80	40.0*	40.0*	36.7*	30.6*	29.1*	23.8*	19.9*	18.6*	17.3*	16.0*	12.2*	11.0*	10.3*
	90	40.0*	40.0*	36.7*	29.7*	28.7*	22.1*	19.3*	18.1*	15.5*	11.9*	10.6*	10.1*	10.1*
	100	40.0*	37.9*	35.1*	29.1*	26.6*	20.7*	18.7*	17.6*	14.5*	11.3*	10.3*	9.9*	9.9*
	110	35.6	35.8	33.2*	27.8*	24.7*	19.5*	18.1*	17.0*	13.6*	10.7*	10.1*	9.7*	9.7*
	120	31.5	31.6	31.6*	26.1*	23.0*	18.5*	17.6*	16.3*	12.9*	10.3*	9.9*	9.5*	9.5*
	130	28.0	28.0		24.6*	21.6*	17.7*	17.0*	15.3*	12.2*	10.1*	9.7*	9.0*	9.0*
	140	25.1			23.3*	20.4*	16.9*	16.4*	14.4*	11.6*	9.9*	9.5*	8.5*	8.5*
	150	22.6			22.1*	19.3*		15.8*	13.6*	11.1*	9.7*	9.2*	8.1*	8.1*
	160				21.0*			15.1*	12.9*	10.7*	9.4*	9.0*	7.8*	7.8*
170				19.2			14.3*	12.3*		9.2*	8.6*	7.5*	7.5*	
180							13.6*			8.9*	8.2*	7.2*	7.2*	
190										8.4*	7.8*			
200										7.9*				
150'	35	40.0*			32.0*			21.6*			13.8*			
	40	40.0*	40.0*		32.0*	31.5*	29.0*	21.2*	20.0*		13.4*	12.4*		
	50	40.0*	40.0*	40.0*	32.0*	30.8*	26.7*	20.8*	19.5*	18.1*	13.0*	11.9*		
	60	40.0*	40.0*	40.0*	32.0*	30.8*	26.7*	20.8*	19.5*	18.1*	13.0*	11.9*		
	70	40.0*	40.0*	39.7*	31.9*	30.0*	24.8*	20.3*	18.9*	17.3*	12.7*	11.4*		
	80	40.0*	40.0*	37.1*	31.2*	29.4*	23.1*	19.8*	18.4*	16.1*	12.2*	10.9*	10.3*	
	90	40.0*	40.0*	36.7*	30.4*	29.0*	23.1*	19.8*	18.4*	16.1*	12.2*	10.9*	10.2*	
	100	39.8	40.0*	36.7*	29.6*	28.6*	21.7*	19.2*	17.9*	15.1*	11.7*	10.4*	10.0*	
	110	35.0	35.3	35.2*	27.9*	26.5*	20.5*	18.6*	17.5*	14.2*	11.5*	10.3*	9.8*	
	120	30.8	31.0	31.3	26.2*	24.7*	19.5*	18.1*	17.0*	13.4*	10.7*	10.1*	9.6*	
	130	27.4	27.5	27.7	24.6*	23.2*	18.6*	17.6*	16.3*	12.8*	10.3*	9.9*	9.4	
	140	24.4	24.5		23.2*	21.9*	17.8*	17.0*	15.3*	12.2*	10.1*	9.7*	8.9	
	150	21.9	22.0		22.0*	20.8*	17.1*	16.0*	14.5*	11.7*	9.9*	9.5*	8.5*	
	160	19.8			20.4	19.8*		15.0*	13.8*	11.2*	9.7*	9.3*	8.0*	
	170				18.5	18.6		14.2*	13.1*	10.8*	9.5*	9.1*	7.3*	
180				16.8			13.4*	12.6*		9.3*	8.8*	6.6*		
190							12.8*	12.1*		9.0*	8.4*	6.2*		
200							12.2*			8.7*	8.0*			
210										8.3*	7.6*			
220										7.8*				
170'	35	40.0*			32.0*			21.7*			13.9*			
	40	40.0*	40.0*		32.0*	31.7*	29.3*	21.3*	20.2*		13.5*			
	50	40.0*	40.0*	40.0*	32.0*	31.1*	27.6*	21.0*	19.7*	18.3*	13.2*	12.1*		
	60	40.0*	40.0*	40.0*	32.0*	30.4*	27.6*	21.0*	19.7*	18.3*	13.2*	12.1*	10.4*	
	70	40.0*	40.0*	40.0*	32.0*	30.4*	27.6*	21.0*	19.7*	18.3*	13.2*	12.1*	10.2*	
	80	40.0*	40.0*	38.7*	31.7*	29.7*	25.7*	20.6*	19.2*	17.8*	12.9*	11.6*	10.1*	
	90	40.0*	40.0*	36.5*	31.0*	29.2*	24.1*	20.1*	18.7*	16.6*	12.5*	11.2*	9.9*	
	100	39.1	39.5	36.6*	29.7*	28.5*	22.7*	19.6*	18.2*	15.6*	12.1*	10.7*	10.1*	
	110	34.4	34.7	35.0	27.8*	26.8*	21.5*	19.1*	17.8*	14.7*	11.6*	10.4*	9.9*	
	120	30.2	30.4	30.7	26.1*	25.3*	20.4*	18.6*	17.4*	14.0*	11.1*	10.2*	9.7*	
	130	26.7	26.9	27.1	24.5*	23.9*	19.4*	18.1*	16.9*	13.3*	10.6*	10.0*	9.6*	
	140	23.8	23.9	24.1	23.1*	22.6*	18.6*	17.0*	16.3*	12.7*	10.3*	9.9*	9.0*	
	150	21.3	21.4	21.5	21.8*	21.4*	17.9*	15.9*	15.4*	12.2*	10.2*	9.7*	8.3*	
	160	19.1	19.1		19.7	19.9	17.3*	15.0*	14.6*	11.7*	10.0*	9.5*	7.5*	
	170	17.2	17.2		17.8	18.0	16.7*	14.1*	13.9*	10.8*	9.8*	9.3*	6.9*	
180	15.5			16.1	16.3		13.3*	13.2*	10.0*	9.6*	9.1*	6.4*		
190				14.6			12.6*	12.5*	9.1*	9.4*	8.7*	5.8*		
200				13.3			12.0*	12.0*		9.0*	8.2*	5.3*		
210							11.4*	11.4*		8.6*	7.6*			
220							10.9*			8.2*	7.0*			
230										7.8*				
240										7.5*				
190'	40	40.0*			32.0*	31.9*	29.4*	21.8*			13.6*			
	50	40.0*	40.0*	40.0*	32.0*	31.3*	28.4*	21.5*	20.3*	18.4*	13.3*	12.2*		
	60	40.0*	40.0*	40.0*	32.0*	30.7*	28.4*	21.1*	19.9*	18.0*	13.0*	11.8*	10.4*	
	70	40.0*	40.0*	40.0*	32.0*	30.7*	28.4*	21.1*	19.9*	18.0*	13.0*	11.8*	10.3*	
	80	40.0*	40.0*	40.0*	32.0*	30.1*	26.5*	20.8*	19.4*	17.0*	12.7*	11.4*	10.1*	
	90	40.0*	40.0*	37.8*	31.5*	29.4*	24.9*	20.4*	19.0*	17.1*	12.9*	11.4*	10.3*	
	100	38.4	38.9	36.6*	29.4*	28.2*	23.5*	20.0*	18.5*	16.1*	12.4*	11.0*	10.1*	
110	33.7	34.1	34.5	27.6*	26.5*	22.3*	19.5*	18.1*	15.2*	11.9*	10.5*	10.0*		
120	29.5	29.8	30.1	25.9*	25.0*	21.2*	19.0*	17.7*	14.4*	11.5*	10.3*	9.8*		

⊙ Capacities shown in thousand pounds.

(Continued)



PORTLAND OFFICE: 503.283.3111
 SEATTLE OFFICE: 206.784.1054
WWW.NESSCAMPBELL.COM

HC-268 jib capacities — open throat boom (U.S. units)

Refer to Notes page 5.

Boom length	Load radius	Capacities ① — over side and 360° swing											
		30' jib			50' jib			70' jib			90' jib		
		Jib angles to boom (jib offset degrees)											
		5°	15°	25°	5°	15°	25°	5°	15°	25°	5°	15°	25°
Feet	Feet	Pounds			Pounds			Pounds			Pounds		
190'	130	26.0	26.3	26.5	24.3*	23.6*	20.2*	18.0*	17.3*	13.8*	11.0*	10.2*	9.5*
	140	23.1	23.3	23.5	22.9*	22.3*	19.4*	16.9*	16.4*	13.2*	10.6*	10.0*	8.6*
	150	20.6	20.7	20.9	21.2	21.1*	18.6*	15.8*	15.4*	12.2*	10.3*	9.8*	7.9*
	160	18.4	18.5	18.7	19.0	19.3	17.8*	14.9*	14.5*	11.0*	10.2*	9.7*	7.1*
	170	16.5	16.6		17.1	17.3	16.5*	14.0*	13.7*	10.1*	10.0*	9.5*	6.5*
	180	14.8	14.9		15.4	15.6	14.8*	13.2*	13.0*	9.1*	9.8*	8.9*	5.9*
	190	13.3			13.9	14.1		12.5*	12.3*	8.5*	9.5*	8.2*	5.4*
	200	12.0			12.6	12.7		11.8*	11.6*	7.8*	8.9*	7.5*	5.0*
	210				11.4			11.2*	10.9*		8.5*	7.1*	4.5*
	220				10.3			10.7*	10.0*		8.0*	6.6*	4.3*
	230							9.8			7.6*	6.2*	
	240							8.9			7.3*	5.7*	
	250										7.0*		
260										6.7*			
210'	40	40.0*			32.0*			21.9*					
	50	40.0*	40.0*	40.0*	32.0*	31.5*	29.5*	21.6*					
	60	40.0*	40.0*	40.0*	32.0*	31.0*	29.0*	21.3*					
	70	40.0*	40.0*	40.0*	32.0*	30.4*	27.2*	21.0*	20.0*				
	80	40.0*	40.0*	40.0*	32.0*	30.4*	27.2*	21.0*	19.6*	18.1*			
	90	40.0*	40.0*	39.1*	30.9*	29.5*	25.7*	20.6*	19.2*	17.5*	13.7*	12.4*	
	100	37.7	38.2	37.1*	28.9*	27.7*	24.3*	20.3*	18.8*	16.5*	12.6*	11.6*	10.3*
	110	33.0	33.4	33.9*	27.1*	26.1*	23.0*	19.8*	18.3*	15.6*	12.2*	10.8*	10.1*
	120	28.8	29.2	29.5	25.5*	24.6*	22.0*	19.0*	18.0*	14.9*	11.8*	10.4*	9.9*
	130	25.3	25.6	25.9	23.9*	23.2*	20.9*	17.8*	17.2*	13.7*	11.4*	10.3*	9.1*
	140	22.4	22.6	22.9	22.5*	21.9*	19.0*	16.6*	16.2*	12.4*	11.0*	10.1*	8.2*
	150	19.8	20.0	20.3	20.5	20.7*	17.6*	15.6*	15.2*	11.2*	10.5*	10.0*	7.3*
	160	17.7	17.8	18.0	18.3	18.6	16.0*	14.7*	14.4*	10.1*	10.3*	9.6*	6.7*
	170	15.7	15.9	16.1	16.5	16.7	14.6*	13.8*	13.1*	9.2*	10.2*	8.9*	6.1*
	180	14.1	14.2	14.3	14.7	15.0	13.3*	13.1*	12.3*	8.5*	9.9*	8.3*	5.5*
	190	12.6	12.7		13.2	13.4	12.3*	12.3*	11.3*	7.8*	9.4*	7.7*	5.1*
	200	11.3	11.3		11.8	12.0	11.5*	11.7*	10.4*	7.1*	8.8*	7.0*	4.7*
	210	10.1			10.6	10.8		11.1*	9.7*	6.6*	8.4*	6.5*	4.3*
220	9.0			9.6	9.7		10.0	8.9*		7.9*	6.1*	3.9*	
230				8.6			9.0	8.3*		7.5*	5.7*	3.6*	
240				7.7			8.1	7.9*		7.2*	5.3*		
250							7.3			6.8*	4.9*		
260							6.5			6.4*	4.6*		
270										6.1*			
280										5.5			
230'	50	40.0*	40.0*	40.0*	32.0*	31.7*	29.3*	21.7*			13.8*		
	60	40.0*	40.0*	40.0*	32.0*	31.2*	29.3*	21.4*			13.6*		
	70	40.0*	40.0*	40.0*	32.0*	30.6*	27.9*	21.1*	20.2*		13.3*		
	80	40.0*	40.0*	40.0*	32.0*	30.6*	26.3*	20.8*	19.8*	18.2*	13.3*	12.1*	
	90	40.0*	40.0*	40.0*	30.1*	28.7*	26.3*	20.8*	19.4*	17.8*	13.0*	11.7*	10.4*
	100	37.0	37.6	35.6*	28.2*	27.0*	25.0*	20.5*	19.0*	16.9*	12.7*	11.4*	10.3*
	110	32.3	32.8	32.2*	26.5*	25.4*	22.8*	19.9*	18.6*	15.6*	12.5*	11.0*	10.1*
	120	28.1	28.5	28.9	24.9*	24.0*	20.6*	18.7*	18.0*	13.8*	12.1*	10.6*	9.5*
	130	24.6	25.0	25.3	23.4*	22.6*	18.9*	17.5*	16.9*	12.6*	11.7*	10.4*	8.5*
	140	21.6	21.9	22.3	22.0*	21.4*	17.0*	16.4*	15.3*	11.5*	11.3*	10.2*	7.6*
	150	19.1	19.4	19.6	19.7	19.6*	15.4*	15.4*	14.2*	10.3*	10.9*	9.9*	6.9*
	160	16.9	17.1	17.4	17.5	18.0	14.3*	14.5*	12.9*	9.3*	10.5*	9.0*	6.3*
	170	15.0	15.2	15.4	15.6	16.0	12.9*	13.6*	11.8*	8.5*	10.3*	8.3*	5.6*
	180	13.3	13.5	13.7	13.9	14.3	11.8*	12.8*	11.0*	7.7*	9.8*	7.7*	5.1*
	190	11.8	12.0	12.1	12.4	12.7	10.9*	12.1*	10.1*	7.1*	9.1*	7.1*	4.7*
	200	10.5	10.6		11.1	11.3	10.1*	11.5*	9.2*	6.5*	8.6*	6.6*	4.3*
	210	9.3	9.4		9.9	10.1	9.3*	10.3	8.6*	6.0*	8.1*	6.0*	3.9*
	220	8.2	8.3		8.8	9.0		9.3	8.0*	5.5*	7.4*	5.6*	3.6*
230	7.2			7.8	7.9		8.3	7.4*	5.0*	6.9*	5.1*	3.3*	
240	6.4			6.9	7.0		7.4	6.8*		6.4*	4.7*	3.0*	
250				6.1			6.5	6.5*		6.1*	4.4*	2.9*	
260				5.3			5.8			5.7*	4.1*		
270							5.1			5.4	3.9*		
280										4.8			
290										4.2			
250'	50	40.0*	40.0*	40.0*	32.0*	31.8*	29.4*	21.8*			13.9*		
	60	40.0*	40.0*	40.0*	32.0*	31.4*	29.4*	21.5*			13.7*		
	70	40.0*	40.0*	40.0*	32.0*	31.0*	27.4*	21.2*	20.3*		13.4*	12.2*	
	80	40.0*	40.0*	39.0*	29.1*	29.6*	27.8*	24.8*	19.9*	18.3*	13.4*	11.9*	10.4*
	90	40.0*	38.6*	33.5*	29.1*	27.8*	24.8*	21.0*	19.6*	17.6*	13.1*	11.9*	10.3*
	100	36.3	33.4*	30.6*	27.3*	26.2*	22.7*	20.7*	19.2*	15.9*	12.9*	11.5*	10.0*
	110	31.6	30.9*	28.0*	25.7*	24.2*	20.5*	19.5*	18.4*	14.2*	12.6*	11.2*	10.0*
120	27.3	27.9	25.6*	24.1*	22.4*	18.3*	18.2*	16.7*	12.8*	12.3*	10.8*	8.9*	
130	23.8	24.3	23.5*	22.7*	20.4*	16.8*	17.1*	15.2*	11.6*	12.0*	10.5*	8.0*	

① Capacities shown in thousand pounds.

(Continued)



PORTLAND OFFICE: 503.283.3111
 SEATTLE OFFICE: 206.784.1054
WWW.NESSCAMPBELL.COM

HC-268 jib capacities — open throat boom (U.S. units)

Refer to Notes page 5.

Boom length	Load radius	Capacities ①— over side and 360° swing												
		30' jib			50' jib			70' jib			90' jib			
		Jib angles to boom (jib offset degrees)												
		5°	15°	25°	5°	15°	25°	5°	15°	25°	5°	15°	25°	
Feet	Feet	Pounds			Pounds			Pounds			Pounds			
250'	140	20.9	21.3	21.6	21.2*	18.6*	15.1*	16.0*	13.9*	10.4*	11.6*	9.9*	7.2*	
	150	18.3	18.7	19.0	19.0	17.0*	13.9*	15.0*	12.8*	9.5*	11.2*	9.1*	6.5*	
	160	16.1	16.4	16.7	16.7	15.9*	12.6*	14.1*	11.6*	8.6*	10.6*	8.4*	5.8*	
	170	14.2	14.5	14.7	14.8	14.6*	11.4*	13.1*	10.7*	7.7*	9.8*	7.7*	5.2*	
	180	12.5	12.8	13.0	13.1	13.4*	10.5*	12.3*	9.8*	7.1*	9.1*	7.1*	4.8*	
	190	11.0	11.3	11.4	11.6	12.0	9.7*	11.3*	8.9*	6.5*	8.4*	6.5*	4.3*	
	200	9.7	9.9	10.1	10.3	10.6	9.0*	10.4*	8.3*	5.9*	7.8*	6.0*	3.9*	
	210	8.5	8.7		9.1	9.4	8.2*	9.5	7.7*	5.4*	7.3*	5.5*	3.6*	
	220	7.4	7.6		8.0	8.3	7.7*	8.4	7.1*	4.9*	6.7*	5.0*	3.3*	
	230	6.4	6.5		7.0	7.2		7.4	6.7*	4.6*	6.2*	4.7*	3.1*	
	240	5.5			6.1	6.3		6.5	6.2*	4.3*	5.8*	4.4*	2.8*	
	250	4.7			5.2	5.4		5.7	5.8*		5.4*	4.1*	2.6*	
	260	3.9			4.5			4.9	5.2		5.1*	3.8*	2.4*	
	270				3.8			4.2	4.5		4.6	3.5*		
280							3.6			3.9	3.3*			
290							3.0			3.3	3.1*			
300										2.8	2.8*			
310										2.3	2.3*			
270'	50	40.0*			32.0*			21.9*						
	60	40.0*	40.0*	40.0*	31.5*	30.1*	27.1*	21.6*	20.4*		13.7*			
	70	40.0*	39.9*	34.7*	31.5*	29.7*	24.6*	21.4*	20.1*	18.1*	13.5*	12.3*		
	80	38.4*	34.0*	31.7*	29.7*	27.9*	24.6*	21.4*	20.1*	19.7*	16.3*	13.3*	12.0*	
	90	33.3*	31.5*	28.9*	27.9*	25.6*	22.1*	21.1*	19.7*	19.7*	16.3*	13.3*	12.0*	
	100	30.4*	29.0*	26.5*	25.8*	23.2*	19.9*	20.1*	18.1*	18.1*	14.6*	13.0*	11.7*	10.3*
	110	27.9*	26.5*	24.4*	23.8*	21.4*	18.0*	18.9*	16.4*	16.4*	13.2*	12.8*	11.3*	9.3*
	120	25.8*	24.6*	22.4*	21.9*	19.6*	16.5*	17.6*	15.1*	15.1*	11.9*	12.5*	11.0*	8.2*
	130	23.1	22.5*	20.6*	20.0*	17.9*	15.0*	16.1*	13.6*	13.6*	10.5*	12.2*	10.2*	7.4*
	140	20.1	20.6	18.6*	18.4*	16.3*	13.6*	14.8*	12.6*	12.6*	9.6*	11.4*	9.3*	6.6*
	150	17.6	18.0	17.1*	17.0*	15.1*	12.2*	13.6*	11.4*	11.4*	8.6*	10.4*	8.5*	6.0*
	160	15.4	15.7	15.8*	15.7*	13.9*	11.3*	12.6*	10.4*	10.4*	7.8*	9.8*	7.7*	5.4*
	170	13.5	13.8	14.1	14.1	12.7*	10.3*	11.7*	9.6*	9.6*	7.1*	9.0*	7.1*	4.9*
	180	10.3	10.5	10.7	12.4	11.6*	9.4*	10.7*	8.9*	8.9*	6.5*	8.2*	6.5*	4.4*
	190	8.9	9.2	9.4	10.9	10.8*	8.6*	9.8*	8.0*	8.0*	5.9*	7.7*	5.9*	4.0*
	200	7.7	7.9	8.1	9.5	9.9	7.9*	9.2*	7.4*	7.4*	5.4*	7.1*	5.4*	3.6*
	210	6.6	6.8	7.0	8.3	8.7	7.3*	8.5*	6.8*	6.8*	4.9*	6.5*	5.0*	3.3*
	220	5.6	5.8		7.2	7.5	6.8*	7.7	6.4*	6.4*	4.6*	6.0*	4.6*	3.0*
230	4.7	4.9		6.2	6.5	6.3*	6.7	5.9*	5.9*	4.2*	5.6*	4.3*	2.8*	
240	3.9	4.0		5.3	5.6	5.8	5.8	5.4*	5.4*	3.9*	5.3*	3.9*	2.5*	
250	3.2			4.5	4.7		4.9	5.1*	5.1*	3.6*	4.8*	3.6*	2.3*	
260	2.5			3.7	3.9		4.2	4.5	4.5	3.3*	4.5	3.3*	2.2*	
270				3.0	3.2		3.5	3.8	3.8		3.8	3.1*	2.0*	
280				2.4			2.8	3.1	3.1		3.2	2.9*		
290							2.2	2.4	2.4		2.6	2.8*		
300											2.0	2.3*		
290'	60	38.8*	34.7*		31.2*			21.9*			13.8*			
	70	33.1*	31.6*		28.6*	26.8*		21.7*			13.6*	12.4*		
	80	38.8*	34.7*		26.1*	24.5*		21.5*	19.7*	14.9*	13.4*	12.1*		
	90	33.1*	31.6*	29.8*	24.1*	22.2*	21.8*	19.7*	19.9*	19.9*	13.2*	11.8*	9.7*	
	100	30.3*	29.2*	27.1*	22.0*	20.2*	17.6*	18.3*	16.3*	16.3*	13.2*	11.8*	8.7*	
	110	23.7*	22.4*	20.7*	20.0*	18.3*	15.8*	16.7*	14.7*	14.7*	11.8*	12.9*	11.2*	8.7*
	120	21.7*	20.6*	18.9*	18.6*	16.7*	14.4*	15.3*	13.3*	13.3*	10.7*	12.0*	10.2*	7.7*
	130	19.9*	18.8*	17.2*	16.9*	15.3*	13.1*	14.1*	12.0*	12.0*	9.5*	11.1*	9.1*	6.9*
	140	18.3*	17.4*	16.0*	15.6*	14.1*	11.8*	12.8*	10.9*	10.9*	8.5*	10.2*	8.3*	6.2*
	150	16.8*	16.0*	14.5*	14.4*	12.8*	10.8*	11.7*	10.0*	10.0*	7.7*	9.4*	7.6*	5.5*
	160	15.5*	14.8*	13.4*	13.1*	11.7*	9.9*	10.8*	9.1*	9.1*	6.9*	8.5*	6.8*	4.9*
	170	13.7	13.6*	12.3*	12.2*	10.8*	8.9*	10.0*	8.3*	8.3*	6.2*	7.9*	6.3*	4.4*
180	12.0	12.3	11.3*	11.1*	9.9*	8.2*	9.2*	7.7*	7.7*	5.7*	7.2*	5.6*	4.0*	
190	10.4	10.7	10.4*	10.3*	9.2*	7.4*	8.4*	6.9*	6.9*	5.2*	6.6*	5.1*	3.6*	
200	9.0	9.3	9.5	9.6	8.4*	6.8*	7.7*	6.4*	6.4*	4.7*	6.1*	4.7*	3.2*	
210	7.8	8.0	8.2	8.3	7.9*	6.4*	7.2*	5.9*	5.9*	4.3*	5.6*	4.4*	2.9*	
220	6.6	6.8	7.0	7.2	7.2*	5.8*	6.6*	5.4*	5.4*	4.0*	5.2*	4.0*	2.7*	
230	5.6	5.8	6.0	6.2	6.5	5.4*	6.2*	5.1*	5.1*	3.6*	4.8*	3.7*	2.4*	
240	4.7	4.8		5.2	5.5	5.0*	5.7	4.7*	4.7*	3.4*	4.5*	3.4*	2.2*	
250	3.8	4.0		4.4	4.7	4.6*	4.8	4.3*	4.3*	3.1*	4.1*	3.1*	2.0*	
260	3.0	3.2		3.6	3.8		4.0	4.0*	4.0*	2.9*	3.9*	2.9*		
270	2.3	2.4		2.8	3.1		3.3	3.7	3.7	2.7*	3.5*	2.7*		
280				2.2	2.4		2.6	3.0	3.0		3.0	2.5*		
290							2.0	2.3	2.3		2.4	2.4*		
300'	60	33.5*	32.3*		29.2*			21.7*			13.8*			
	70	30.9*	29.7*	27.8*	26.6*	25.1*		20.5*			13.6*			
	80	28.4*	27.1*	25.2*	24.4*	22.8*	20.3*	20.5*	18.7*		13.4*	12.2*		
	90	26.1*	24.8*	23.1*	22.4*	20.8*	18.4*	18.8*	16.8*	14.2*	13.4*	11.9*	9.4*	
	100	24.0*	22.7*	21.0*	20.6*	18.8*	16.5*	17.3*	15.2*	12.6*	13.2*	11.9*	8.3*	
	110	21.9*	20.8*	19.2*	18.8*	17.3*	14.9*	15.7*	13.7*	11.2*	12.6*	10.7*		

① Capacities shown in thousand pounds.

(Continued)



PORTLAND OFFICE: 503.283.3111
SEATTLE OFFICE: 206.784.1054

WWW.NESSCAMPBELL.COM

LINK BELT

HC-268 Rolling Outrigger Capacities Open Throat Boom

Notes:

1. Shaded capacities are strength limited.
2. Stability capacities are based on 75% of the tipping load.
3. Maximum rolling outrigger reaction is 230,000 lbs per side.
The roller assemblies must be strong enough to bear this load.
4. Rear outrigger beams must be fully extended.
5. Rear outrigger jacks must be extended until the rollers just touch the ground.
The rear tires must not be lifted off the supporting surface.
6. Front outrigger jacks and fifth outrigger jack must be retracted, with the front of the crane supported by the front tires.
7. The rollers must be restrained from pivoting and some means must be provided to maintain the alignment of the rollers parallel to the axis of the crane.
Alteration of the outrigger beams is prohibited.
8. Refer to all notes and warnings in the Main Boom Crane Rating Manual and the Operator's Manual.
9. The customer assumes all responsibility for the rolling outriggers.
Link Belt Construction Equipment requires an Indemnification Agreement to be on file before capacities are valid. Link Belt assumes no responsibility for the design of the roller assemblies or other modifications not approved by Link Belt.



PORTLAND OFFICE: 503.283.3111
SEATTLE OFFICE: 206.784.1054
WWW.NESSCAMPBELL.COM

HC-258 Rolling Outrigger Capacities
Open Throat Boom

Boom Length (ft)	Load Radius (ft)	Boom Angle (deg)	Over The Rear - 1 MPH AB + A (lbs)
90	15.69	82.0	258,200
90	16	81.8	255,200
90	17	81.2	246,000
90	18	80.5	237,300
90	19	79.9	229,300
90	20	79.2	221,900
90	25	76.0	190,200
90	30	72.7	156,300
90	35	69.3	147,600
90	40	65.8	132,300
90	50	58.5	108,200
90	60	50.8	84,400
90	70	42.0	68,700
90	80	31.4	57,500
90	90	15.2	49,100

Boom Length (ft)	Load Radius (ft)	Boom Angle (deg)	Over The Rear - 1 MPH AB + A (lbs)
100	17.08	82.0	224,200
100	18	81.5	236,400
100	19	80.9	228,400
100	20	80.3	221,100
100	25	77.4	189,500
100	30	74.4	155,700
100	35	71.4	147,000
100	40	68.4	131,700
100	50	62.1	107,800
100	60	55.4	84,300
100	70	48.1	68,600
100	80	39.8	57,400
100	90	29.7	49,000
100	100	14.5	42,600

Boom Length (ft)	Load Radius (ft)	Boom Angle (deg)	Over The Rear - 1 MPH AB + A (lbs)
110	18.48	82.0	231,500
110	19	81.7	227,400
110	20	81.2	220,200
110	25	78.5	188,700
110	30	75.9	165,000
110	35	73.2	146,400
110	40	70.4	131,100
110	50	64.8	107,400
110	60	58.9	84,100
110	70	52.6	68,400
110	80	45.7	57,200
110	90	37.9	48,900
110	100	28.3	42,400
110	110	13.8	37,400



PORTLAND OFFICE: 503.283.3111
SEATTLE OFFICE: 206.784.1054
WWW.NESSCAMPBELL.COM

LINK BELT

HC-268 Rolling Outrigger Capacities
Open Throat Boom

Boom Length (ft)	Load Radius (ft)	Boom Angle (deg)	Over The Rear - 1 MPH AB + A (lbs)
120	19.87	82.0	220,200
120	20	81.9	219,300
120	25	79.5	187,900
120	30	77.1	154,300
120	35	74.6	145,700
120	40	72.1	130,600
120	50	67.0	106,900
120	60	61.7	83,900
120	70	56.2	68,200
120	80	50.2	57,000
120	90	43.6	48,700
120	100	36.2	42,200
120	110	27.1	37,200
120	120	13.2	33,000

Boom Length (ft)	Load Radius (ft)	Boom Angle (deg)	Over The Rear - 1 MPH AB + A (lbs)
130	21.26	82.0	209,600
130	25	80.3	187,100
130	30	78.1	153,600
130	35	75.8	145,100
130	40	73.5	129,900
130	50	68.9	106,400
130	60	64.1	83,700
130	70	59.1	68,000
130	80	53.8	56,800
130	90	48.1	48,400
130	100	41.9	42,000
130	110	34.7	37,000
130	120	26.0	32,800
130	130	12.7	29,300

Boom Length (ft)	Load Radius (ft)	Boom Angle (deg)	Over The Rear - 1 MPH AB + A (lbs)
140	22.65	82.0	196,300
140	25	81.0	136,200
140	30	79.0	152,800
140	35	76.9	144,400
140	40	74.7	129,300
140	50	70.5	105,800
140	60	66.0	83,400
140	70	61.5	67,800
140	80	56.7	56,500
140	90	51.7	48,200
140	100	46.2	41,700
140	110	40.3	36,800
140	120	33.4	32,600
140	130	25.0	29,100
140	140	12.2	26,100



PORTLAND OFFICE: 503.283.3111
SEATTLE OFFICE: 206.784.1054
WWW.NESSCAMPBELL.COM

HC-268 Rolling Outrigger Capacities
Open Threat Boom

Boom Length (ft)	Load Radius (ft)	Boom Angle (deg)	Over The Rear - 1 MPH AB + A (lbs)
150	24.04	82.0	179,900
150	25	81.6	178,200
150	30	79.7	162,100
150	35	77.7	143,700
150	40	75.8	128,500
150	50	71.9	105,400
150	60	67.7	83,200
150	70	63.5	67,500
150	80	59.2	56,300
150	90	54.6	47,900
150	100	49.3	41,400
150	110	44.5	36,500
150	120	38.8	32,400
150	130	32.3	28,900
150	140	24.2	25,900
150	150	11.3	23,400

Boom Length (ft)	Load Radius (ft)	Boom Angle (deg)	Over The Rear - 1 MPH AB + A (lbs)
160	25.43	82.0	157,100
160	30	80.3	160,800
160	35	78.5	143,000
160	40	76.7	128,000
160	50	73.0	104,900
160	60	69.2	82,900
160	70	65.3	67,300
160	80	61.3	56,000
160	90	57.1	47,600
160	100	52.8	41,100
160	110	48.1	36,300
160	120	43.1	32,100
160	130	37.6	28,600
160	140	31.2	25,700
160	150	23.4	23,100
160	160	11.4	20,900



PORTLAND OFFICE: 503.283.3111
SEATTLE OFFICE: 206.784.1054
WWW.NESSCAMPBELL.COM