

CRANE: LINKBELT RTC-8060	
BOOM LENGTH	110 FT
JIB LENGTH	N.A.
BASE	100% OUTRIGGERS
COUNTERWEIGHT	FULL
END RADIUS	39 FT
CAPACITY AT END RADIUS	18,300 LBS
LOAD AT END RADIUS	LESS THAN 9,900 LBS
% OF CAPACITY	54%
MAX ALLOWABLE WIND SP	8.0 M/SEC

CRANE: LIEBHERR LTM 1500-8.1	
BOOM LENGTH	155 FT @ 83°
JIB LENGTH	138 FT
BASE	100% OUTRIGGERS
COUNTERWEIGHT	297,600 LBS
RADIUS	80 FT
CAPACITY AT RADIUS	126,000 LBS
LOAD AT RADIUS	101,980 LBS
% OF CAPACITY	81%
MAX ALLOWABLE WIND SP	8.0 M/SEC

NOTE: ALL RIGGING ELEMENTS (BLADE SOCKS, BLADE SLINGS, TAG LINES, ETC.) PROVIDED BY OTHERS



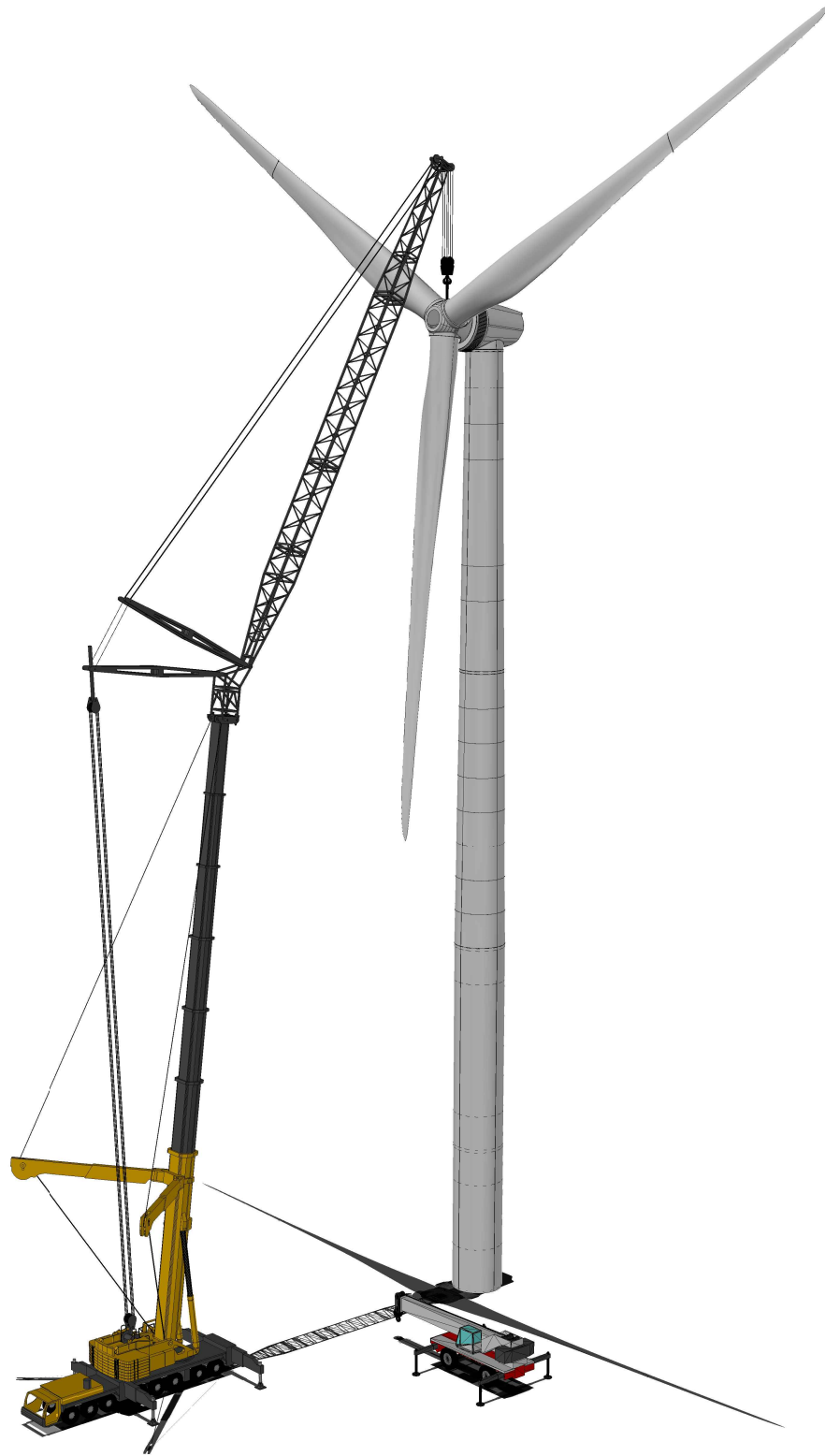
OFFICES:
 SEATTLE DIVISION - 1821 180TH ST S.E.
 BOTHELL, WA 98031
 (206) 784-1054
 PORTLAND DIVISION - 5730 NE 138TH AVE
 PORTLAND, OR 97230
 (503) 283-3111

DISCLOSURE:
 THIS DOCUMENT IS THE PROPERTY OF NESS & CAMPBELL CRANE, INC.
 THIS DOCUMENT SHALL NOT BE REPRODUCED, COPIED, DISCLOSED TO
 OTHERS, OR USED FOR ANY PURPOSE OTHER THAN THAT FOR WHICH IT
 WAS FURNISHED WITHOUT PRIOR WRITTEN CONSENT OF NESS &
 CAMPBELL CRANE, INC.

TITLE: PLAN VIEW (SEQUENCES 1-5)
 PROJECT: ECHO - THREE MILE CANYON
 CUSTOMER: VESTAS WIND AMERICA
 DESCRIPTION: ROTOR HOIST

DATE: 03/22/2017
 DRAWN BY: B.H.
 APPROVED BY: F.D.
 SCALE: N.T.S.
 SHEET: 1 OF 6

NOTE: ALL RIGGING ELEMENTS PROVIDED BY OTHERS



SEQUENCE 1



OFFICES:
SEATTLE DIVISION -

PORTLAND DIVISION -

DISCLOSURE:

THIS DOCUMENT IS THE PROPERTY OF NESS & CAMPBELL CRANE, INC. THIS DOCUMENT SHALL NOT BE REPRODUCED, COPIED, DISCLOSED TO OTHERS, OR USED FOR ANY PURPOSE OTHER THAN THAT FOR WHICH IT WAS FURNISHED WITHOUT PRIOR WRITTEN CONSENT OF NESS & CAMPBELL CRANE, INC.

1821 180TH ST S.E.
BOTHELL, WA 98031
(206) 784-1054
5730 NE 138TH AVE
PORTLAND, OR 97230
(503) 283-3111

TITLE:

3D VIEW (SEQUENCE 1)

PROJECT:

ECHO - THREE MILE CANYON

CUSTOMER:

VESTAS WIND AMERICA

DESCRIPTION:

ROTOR HOIST

DATE:

03/22/2017

DRAWN BY:

B.H.

APPROVED BY:

F.D.

SCALE:

N.T.S.

SHEET:

2 OF 6

NOTE: ALL RIGGING ELEMENTS PROVIDED BY OTHERS



SEQUENCE 2



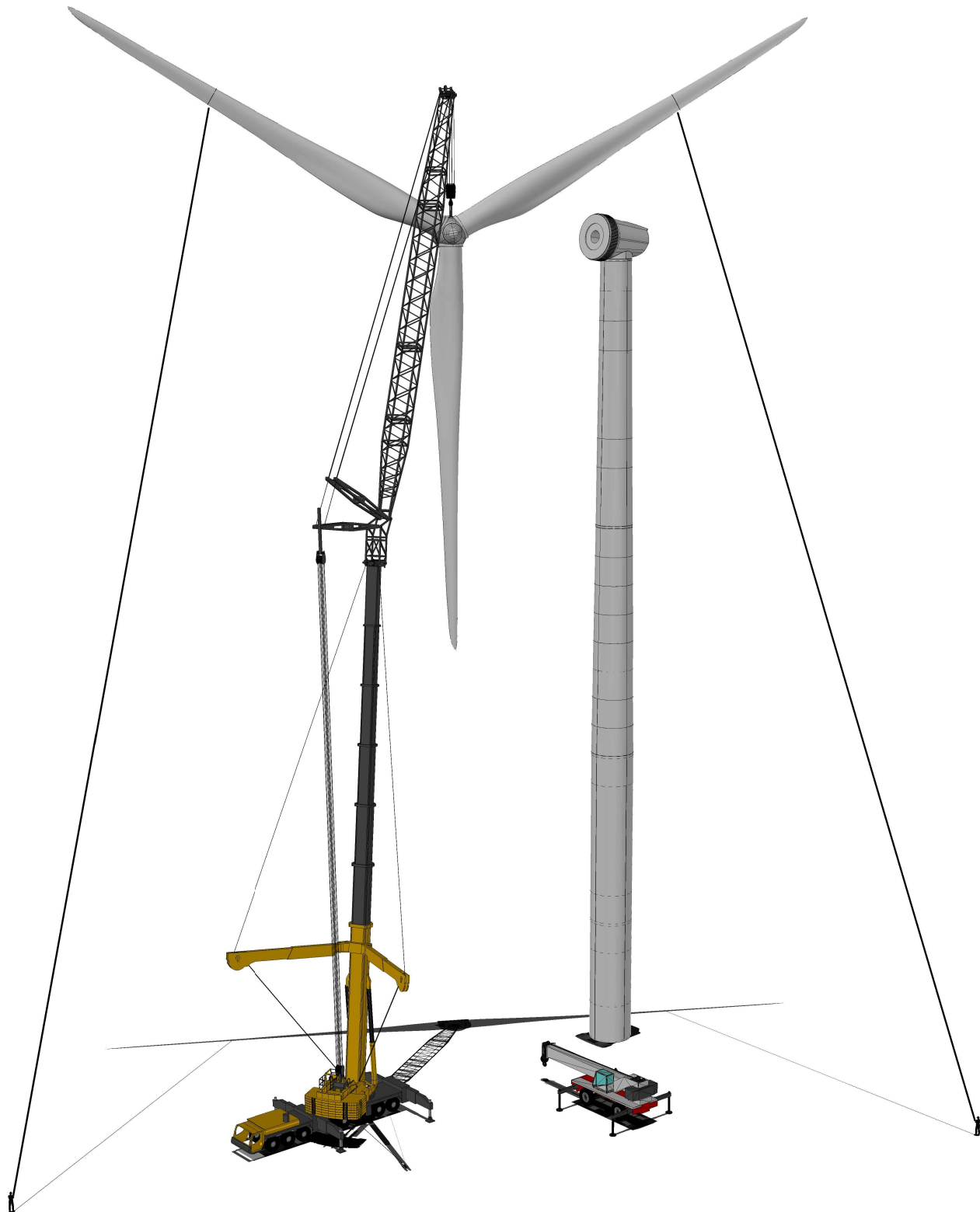
OFFICES:
 SEATTLE DIVISION - 1821 180TH ST S.E.
 BOTHELL, WA 98031
 (206) 784-1054
 PORTLAND DIVISION - 5730 NE 138TH AVE
 PORTLAND, OR 97230
 (503) 283-3111

DISCLOSURE:
 THIS DOCUMENT IS THE PROPERTY OF NESS & CAMPBELL CRANE, INC.
 THIS DOCUMENT SHALL NOT BE REPRODUCED, COPIED, DISCLOSED TO
 OTHERS, OR USED FOR ANY PURPOSE OTHER THAN THAT FOR WHICH IT
 WAS FURNISHED WITHOUT PRIOR WRITTEN CONSENT OF NESS &
 CAMPBELL CRANE, INC.

TITLE: 3D VIEW (SEQUENCE 2)
PROJECT: ECHO - THREE MILE CANYON
CUSTOMER: VESTAS WIND AMERICA
DESCRIPTION: ROTOR HOIST

DATE: 03/22/2017
DRAWN BY: B.H.
APPROVED BY: F.D.
SCALE: N.T.S.
SHEET: 3 OF 6

NOTE: ALL RIGGING ELEMENTS PROVIDED BY OTHERS



SEQUENCE 3



OFFICES:
SEATTLE DIVISION -

PORTLAND DIVISION -

DISCLOSURE:

THIS DOCUMENT IS THE PROPERTY OF NESS & CAMPBELL CRANE, INC. THIS DOCUMENT SHALL NOT BE REPRODUCED, COPIED, DISCLOSED TO OTHERS, OR USED FOR ANY PURPOSE OTHER THAN THAT FOR WHICH IT WAS FURNISHED WITHOUT PRIOR WRITTEN CONSENT OF NESS & CAMPBELL CRANE, INC.

1821 180TH ST S.E.
BOTHELL, WA 98031
(206) 784-1054
5730 NE 138TH AVE
PORTLAND, OR 97230
(503) 283-3111

TITLE:

3D VIEW (SEQUENCE 3)

PROJECT:

ECHO - THREE MILE CANYON

CUSTOMER:

VESTAS WIND AMERICA

DESCRIPTION:

ROTOR HOIST

DATE:

03/22/2017

DRAWN BY:

B.H.

APPROVED BY:

F.D.

SCALE:

N.T.S.

SHEET:

4 OF 6

NOTE: ALL RIGGING ELEMENTS PROVIDED BY OTHERS



SEQUENCE 4



OFFICES:
SEATTLE DIVISION -

1821 180TH ST S.E.
BOTHELL, WA 98031
(206) 784-1054

PORTLAND DIVISION -

5730 NE 138TH AVE
PORTLAND, OR 97230
(503) 283-3111

DISCLOSURE:
THIS DOCUMENT IS THE PROPERTY OF NESS & CAMPBELL CRANE, INC.
THIS DOCUMENT SHALL NOT BE REPRODUCED, COPIED, DISCLOSED TO
OTHERS, OR USED FOR ANY PURPOSE OTHER THAN THAT FOR WHICH IT
WAS FURNISHED WITHOUT PRIOR WRITTEN CONSENT OF NESS &
CAMPBELL CRANE, INC.

TITLE:

3D VIEW (SEQUENCE 4)

PROJECT:

ECHO - THREE MILE CANYON

CUSTOMER:

VESTAS WIND AMERICA

DESCRIPTION:

ROTOR HOIST

DATE:

03/22/2017

DRAWN BY:

B.H.

APPROVED BY:

F.D.

SCALE:

N.T.S.

SHEET:

5 OF 6

NOTE: ALL RIGGING ELEMENTS PROVIDED BY OTHERS



SEQUENCE 5



OFFICES:
SEATTLE DIVISION -

PORTLAND DIVISION -

DISCLOSURE:

THIS DOCUMENT IS THE PROPERTY OF NESS & CAMPBELL CRANE, INC. THIS DOCUMENT SHALL NOT BE REPRODUCED, COPIED, DISCLOSED TO OTHERS, OR USED FOR ANY PURPOSE OTHER THAN THAT FOR WHICH IT WAS FURNISHED WITHOUT PRIOR WRITTEN CONSENT OF NESS & CAMPBELL CRANE, INC.

1821 180TH ST S.E.
BOTHELL, WA 98031
(206) 784-1054
5730 NE 138TH AVE
PORTLAND, OR 97230
(503) 283-3111

TITLE:

3D VIEW (SEQUENCE 5)

PROJECT:

ECHO - THREE MILE CANYON

CUSTOMER:

VESTAS WIND AMERICA

DESCRIPTION:

ROTOR HOIST

DATE:

03/22/2017

DRAWN BY:

B.H.

APPROVED BY:

F.D.

SCALE:

N.T.S.

SHEET:

6 OF 6